

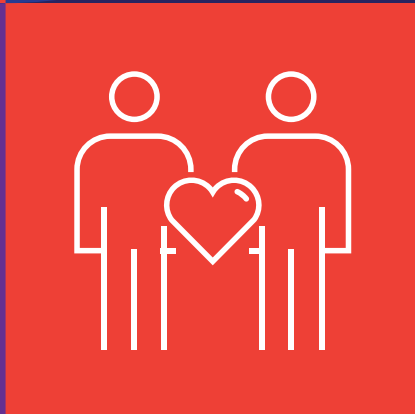
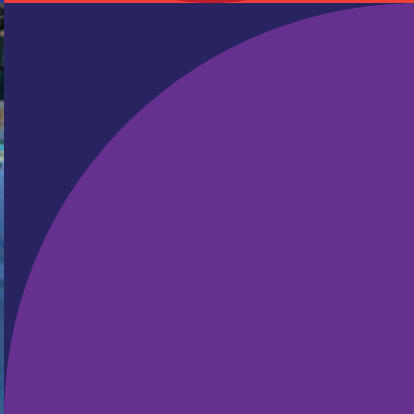
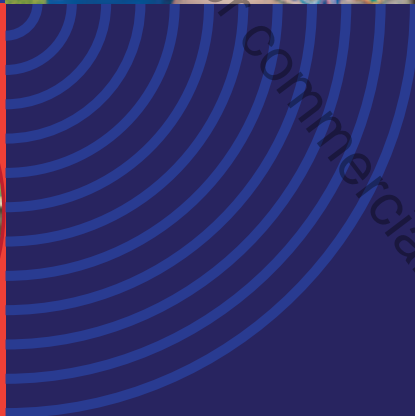
COLUMBUS  
BUSINESS FIRST

2022 - 2023

# Columbus GIVING GUIDE

Regional Philanthropic Opportunities

ADVERTISING SUPPLEMENT TO COLUMBUS BUSINESS FIRST



# IMMERSING OURSELVES IN WHAT MATTERS

TREATING CLIENTS LIKE FRIENDS AND ASSOCIATES LIKE FAMILY

Copyright 2022 American City Business Journals - All rights reserved. No reuse



**SOPHISTICATION OF A BIG BROKER | PERSONALIZED COUNSEL**



614-453-4400 | OH-INS.COM

Founded in 2011, Overmyer Hall Associates is Central Ohio's leading choice for commercial insurance, surety bonding and personal insurance.



**LET'S WORK TOGETHER.**



**PUBLISHER INTRODUCTION**

# Columbus Giving Guide celebrates business community's support of Central Ohio nonprofits



Welcome to *Columbus Business First's* 19th annual publication of the *Columbus Giving Guide*, our annual compendium of corporate support for the Central Ohio nonprofit community.

Every day, central Ohio business owners, c-suite executives and community leaders turn to *Columbus Business First* to stay informed about the people, businesses, developments, financial resources and economic issues impacting our business community. These same executives lead the way in promoting, funding, and supporting responsible corporate citizenship. They donate their time to non-profit boards and generously contribute funding and corporate resources to the many important causes that improve the health, well-being and prosperity of our community.

Nonprofit professionals understand that *Columbus Business First* reaches the leaders who are the lifeblood of their organizations. This year, research director Robin Smith compiled and published our fourth annual Corporate Citizenship list of the top corporate



**COLUMBUS BUSINESS FIRST**

**Nick Fortine**  
President and  
Publisher

fundors of non-profits. We celebrated Columbus' top corporate philanthropists at our Corporate Citizenship Awards honoree reception in June of this year. Be on the lookout for next year's list – the survey should be out in early 2023.

The *Columbus Giving Guide* is a valuable marketing tool for local nonprofit groups, offering them a vehicle that clearly promotes their mission and reaches their donor base. It also allows them to publicize the many programs that need funding and support to prosper and grow.

The *Columbus Giving Guide* is underwritten entirely by the corporate donors of the nonprofit groups featured inside and by *Columbus Business First*. It is published without cost to these nonprofits.

We hope you not only enjoy reading about these Central Ohio nonprofit organizations and their generous donors, but it is our sincere hope that you utilize the *Columbus Giving Guide* when it is time for your business or organization to decide where you will place your charitable dollars.

- ▶ **The ALS Association Central & Southern Ohio Chapter** .....3
- ▶ **The Buckeye Ranch** .....4
- ▶ **Catholic Social Services** .....5
- ▶ **Children's Hunger Alliance** .....6
- ▶ **Community Shelter Board** .....7
- ▶ **Corporate Citizenship List** .....8-11
- ▶ **Conway Center for Family Business** .....12
- ▶ **Friends of CASA of Franklin County, Ohio** .....13
- ▶ **Girl Scouts of Ohio's Heartland**..... 14
- ▶ **Goodwill Columbus** ..... 15
- ▶ **Homeport** ..... 16
- ▶ **LifeCare Alliance**.....17
- ▶ **Nonprofit Organizations** .....18-19
- ▶ **Maryhaven** ..... 20
- ▶ **Mid-Ohio Food Collective** .....21
- ▶ **Mount Carmel Foundation** ..... 22
- ▶ **Netcare Access** ..... 23
- ▶ **Ohio Living Foundation** .....24
- ▶ **Foundations List** ..... 25
- ▶ **OhioHealth Foundation** .....26
- ▶ **The Ohio State University Comprehensive Cancer Center – Arthur G. James Cancer Hospital and Richard J. Solove Research Institute (OSUCCC – James)**.....28
- ▶ **PrimaryOne Health** .....29
- ▶ **Recreation Unlimited** .....30
- ▶ **Ronald McDonald House** .....31
- ▶ **I Know I Can** ..... 32



**COLUMBUS BUSINESS FIRST**

## HELP US SHINE A LIGHT ON COMPANIES WHO CONTRIBUTE BEYOND EXPECTATION.

The Corporate Citizenship survey is a part of a larger initiative to celebrate those who are doing their part to make Central Ohio a better place.

Nomination & Event Details: Melissa Price, 614-220-5436 or mprice@bizjournals.com  
Sponsorship Opportunities: Steve Hewitt, 614-220-5440 or shewitt@bizjournals.com

Presented by:



Underwriting Sponsors:



Nationwide  
is on your side

Event Partner



Corporate  
Citizenship  
AWARDS





The Champion Companies  
Milo Grogan Boys & Girls Club  
Opened Summer 2022

**Enriching** Communities. **Empowering** People. **Enhancing** Lives.

At Champion, we believe in giving back to the communities in which we do business. One of the ways we do that is through our **Champion Cares Foundation**, which proudly surpassed \$3 million donated, in 2022. We are also proud to have recently opened the brand new, state-of-the-art, **The Champion Companies Milo Grogan Club** with Boys & Girls Clubs of Central Ohio. We believe partnerships such as this are the key to creating lasting impacts in our community.

Learn how Champion Cares at [www.thechampioncompanies.com](http://www.thechampioncompanies.com)





# The ALS Association Central & Southern Ohio Chapter

1170 Old Henderson Road, Suite 221 | Columbus, Ohio 43220 | 614-273-2572 | [www.ALSohio.org](http://www.ALSohio.org)



**Marlin K. Seymour**  
Executive Director

## ALS ASSOCIATION

### Central & Southern Ohio Chapter

#### GIVING OPPORTUNITIES:

Help us support people living with ALS through the many opportunities to give to The ALS Association Central & Southern Ohio Chapter.

- Walk to Defeat ALS® and Strike Out ALS® Events
- Individual Giving
- Planned Giving
- Workplace Giving
- Memorials and Tributes
- Corporate Giving and Sponsorships
- Foundation Grants
- Volunteering

#### 2022 BOARD OF DIRECTORS

##### EXECUTIVE COMMITTEE

- Mark Stach**, Chair  
Balchem Corporation
- Ryan Meadows**, Vice Chair  
Price Waterhouse Cooper
- Christopher Hutchison**, Secretary  
NetSteady Communications
- Wendy Pingree**, Treasurer  
The Provisum Group

##### MEMBERS

- Lauren J. Barber**  
Ohio Historical Society
- Paul Carey Jr.**  
SI Sportsbook
- Ben Duckworth**  
AEP Energy Inc.
- Judy Schmitz**  
Retired Educator

## Mission Statement:

Our mission is to discover treatments and a cure for ALS, and to serve, advocate for, and empower people affected by ALS to live their lives to the fullest.

## About The ALS Association Central & Southern Ohio Chapter

The ALS Association Central & Southern Ohio Chapter serves the local needs of those living with amyotrophic lateral sclerosis (Lou Gehrig's Disease) and their caregivers by providing them with free services and support. Our accomplishments are made possible by the generosity of others. From the smallest donation to the largest gift, donors touch the ALS community with hope for the future. The ALS Association is the only national nonprofit organization fighting ALS on every front. By leading the way in global research, providing assistance for people with ALS through a nationwide network of chapters, coordinating multidisciplinary care through certified clinical care centers, and fostering government partnerships, The Association builds hope and enhances quality of life while aggressively searching for new treatments and a cure.

## DONOR IMPACT

All chapter services are funded entirely by donations from our generous supporters, and are provided free of charge within our 55-county territory. We do not receive any financial assistance from our national organization, nor do we receive any government support.

■ **Case Management** – Our licensed healthcare professionals help people navigate their illness with independence, connection, comfort, peace of mind, and quality of life. Each person with ALS registered with our Chapter is assigned a Care Services Coordinator who guides them through all aspects of their support and care. These nurses and social workers are knowledgeable about the complexities of ALS care and the resources available. Having a single point of contact provides

personalized attention and continuity of care.

■ **ALS Clinics** – The Chapter collaborates with hospital-based multidisciplinary ALS clinics at the University of Cincinnati and OhioHealth in Columbus to help facilitate multidisciplinary care for people living with ALS. This interprofessional care that addresses complex needs has been shown to extend lives and improve quality of life. Care Services Coordinators attend clinic sessions twice a month, working hand-in-hand with the clinic team.

■ **Equipment Program** – People with ALS who live in our territory can borrow durable medical and adaptive equipment from the Chapter (subject to availability) at no cost. Examples include wheelchairs, transfer equipment, respiratory equipment, dining utensils, and speech generating

devices. In addition, some items that are not appropriate for reuse are purchased and delivered to people with ALS rather than loaned.

■ **Reimbursement Grant Program** – Quality of Life grants provide up to \$1,200 per person per year to support disease-related expenses.

■ **Education & Exchange Groups** – Monthly meetings provide an opportunity for people with ALS and their caregivers, family members, friends and professionals to connect, learn, share and grow throughout their ALS experience.

■ **Information & Resources** – The Chapter provides ongoing ALS education and information for people with ALS, healthcare professionals, caregivers and others through its monthly print and electronic newsletters, its robust lending library of

resources, phone and in-office consultations, and on-site continuing education.

■ **Caregiver Support** – Our care services team provides children's ALS resources, bereavement support, resource referrals, and caregiver support to help families through their experiences.

■ **Advocacy** – The Chapter advocates on behalf of people living with ALS at the federal and state levels and is actively engaged in activities that are aimed at changing the way the government responds to the needs of the ALS community.

■ **Research** – The ALS Association funds research and clinical trials in search of effective treatments and a cure for the disease, collaborates with stakeholders by providing education and information, and works to inspire and encourage scientific interest in ALS.

## INDIVIDUAL & CORPORATE CONTRIBUTIONS

■ **Events** – We rely heavily on the Walk to Defeat ALS® to generate funds for Chapter programs. We also host Strike Out ALS® events with Major and Minor League Baseball teams.

■ **HoneyBaked Ham** – Purchase gift certificates at [ALSohio.org](http://ALSohio.org) when you plan the menu for your family gatherings. They also make wonderful corporate gifts

for employees, vendors, and more.

■ **Amazon Smile & Kroger Community Rewards** – Support those living with ALS every time you do your regular shopping. Find details at [ALSohio.org](http://ALSohio.org).

■ **Matching Gifts** – Individuals are encouraged to leverage their donation by participating in their

employer's matching gift program, where available. Check to see if your company matches gifts at <http://www.matchinggifts.com/als/>.

■ **Payroll Deduction** – Donors can select our nonprofit when they sign up for payroll deductions through CHC or combined federal campaigns.

■ **Memorials & Tributes** – Donations can be made in memory of a loved one who has lost the battle to ALS, or to honor someone who is currently fighting the disease.

■ **Planned Giving** – Planned gifts allow individuals to leave a lasting gift that will help build long-term financial sustainability and ensure

access to services for future ALS families.

■ **Individual & Corporate Giving** – Individuals and companies play a major role by donating throughout the year. We encourage support of specific programs as well as unrestricted donations.

## GET INVOLVED!

**Donate** – Your gifts provide free services to people living with the devastation of ALS.  
**Volunteer** – We're always looking for people to support our events by helping out with logistics, advertising and promotion, day-of-event registration, set-up, and much more. Volunteers are also needed in the office for occasional administrative support.

If you or someone you know needs support, wishes to volunteer, or would like to make a donation, please get in touch with us at 614-273-2572 or [ALSohio@ALSohio.org](mailto:ALSohio@ALSohio.org).





**Vickie Thompson-Sandy**  
President & CEO



#### GIVING OPPORTUNITIES:

Help us support the children, youth, and families in our community through the many opportunities to invest in The Buckeye Ranch.

- Corporate Giving
- Event Sponsorship
- In-Kind Contributions
- Individual Giving
- Planned Giving
- Adopt-A-Family Holiday Program

#### 2022 BOARD OF DIRECTORS

*Chair:* **Mark Howard**

*Vice Chair:* **Chay Rankin**

*Treasurer:* **Rick Mariotti**

*Secretary:* **William "Chip" Livisay**

*Director:* **Jen Bowen**

*Immediate Post Chair:* **Joe Gallo**

#### TRUSTEES

David Kristal  
Emmet Kelly  
Jason Berkey  
Jay Larsen  
Jax Zachariah  
Jessica McNamee  
Jill Wilder  
Josh Borean  
Lisa Robinson-Shaw  
Mark Hertel  
Matt Fornshell  
Matt Russell  
Nathan West  
Paul Milligan  
Rebecca McGrath  
Ron Carter  
Russel "Brian" Stump  
Stephanie Leader  
Steve Bennett



# The Buckeye Ranch

4653 East Main Street Whitehall, Ohio 43213

Jessica Brown • [jabrown@buckeyeranch.org](mailto:jabrown@buckeyeranch.org) | [buckeyeranch.org](http://buckeyeranch.org)



#### Purpose

For decades, The Buckeye Ranch has been restoring hope and providing healing for the most vulnerable children, youth, and families in Central Ohio. Our continuum of care addresses every stage and aspect of what children may be experiencing after traumas caused by mental illness, abuse, or neglect. With help from The Buckeye Ranch, they're empowered to overcome obstacles, tap into their resilience, and move forward toward healthy, fulfilling lives.

#### Practice

Through residential, community-based, day treatment options, foster care, and child welfare services, our experts use evidence-based, culturally sensitive treatment that puts each family and their strengths at the core. We also call on our community partners to assist with other services, so every child, youth, and family receives comprehensive, coordinated therapies, education, and resources that enable them to heal.

#### THE BUCKEYE RANCH GROWS STRATEGICALLY TO MEET EXPANDING NEEDS



**In July of 2022**, The Buckeye Ranch launched Care Coordination Services as part of the OhioRISE initiative. As a Care Management Entity (CME), The Buckeye Ranch expanded services to assist families whose children have complex needs navigate systems of care and remain together as they heal.

**Over the last year**, education and school-based services expanded to 22 school partnerships providing mental healthcare and prevention to help children stay in their homes and communities. School-based clinicians are essential to helping students overcome some of the challenges of the COVID-19 pandemic promoting social and emotional learning. More than 400 children had a safe and loving home with our Foster Care families, 134 young adults in transitional-aged youth programming increased the skills needed to achieve their independence. Children and their families seeking service continue to have access to assessment and referral the same day. Our residential services achieved the status of Qualified Residential Treatment Provider (QRTP) serving the intensive needs of the nearly 250 youth who call The Buckeye Ranch home while they heal.

#### MAKE AN INVESTMENT



An investment in The Buckeye Ranch ensures a child with a trauma history succeeds in school, that siblings remain together in a loving home while their parents regain stability, that a family doesn't have to give up custody of their son or daughter to get the mental health services they need, and that children, youth and families get the support they need when they need it to restore hope and provide healing.

Your investment in Ohio youth matters. Make an investment in our children, youth, and families at [www.buckeyeranch.org/makeaninvestment.html](http://www.buckeyeranch.org/makeaninvestment.html) or payable to The Buckeye Ranch at 4653 East Main Street Whitehall, Ohio 43213. To invest, contact [Jabrown@buckeyeranch.org](mailto:Jabrown@buckeyeranch.org)

**To volunteer**, contact [vrobinson@buckeyeranch.org](mailto:vrobinson@buckeyeranch.org)

**Email sign-up:** Join our mailing list! [buckeyeranch.org/email-sign-up.html](http://buckeyeranch.org/email-sign-up.html)



# Catholic Social Services

197 E. Gay Street, 2nd Floor | Columbus | 614.221.5891 | [www.colscss.org](http://www.colscss.org)



**Rachel Lustig**  
President & CEO



## GIVING OPPORTUNITIES:

Here are some ways in which community members can support Catholic Social Services.

- Individual & Corporate Giving
- Event Sponsorship
- Program Grants
- Planned Giving
- Our Lady of Guadalupe Center Food Pantry Donations
- Personal Care and Home Goods Donations

## 2022 BOARD OF DIRECTORS

**Ms. Patty Hill-Callahan**, Chair  
Grenzeback, Glier and Associates

**Ms. Angela Savino**, Vice Chair  
Perez Morris

**Mr. Mark Huddy**  
Catholic Diocese of Columbus

**Mr. Joseph Miller**  
Vorys, Sater, Seymour and Pease

**Dr. Mary Ann Abrams**  
Nationwide Children's Hospital

**Ms. Heidie Cotey**  
NiSource

**Mr. Klaus Diem**  
Nationwide

**Mr. Paul Do Forno**  
Deloitte Consulting

**Ms. Kim Dorniden**  
Siemer Institute

**Mr. Brian Elliott**  
JP Morgan Chase & Co.

**Mr. Cole Ellis**  
The Ellis Co., LTD

**Ms. Katie Grayem**  
American Electric Power

**Mr. Joe Hayek**  
Worthington Industries

**Mr. Tom Heise**  
Grange Insurance

**Mr. Paul Heller**  
Huntington

**Ms. Erin Herbst**  
Kegler, Brown, Hill + Ritter

**Dr. Sean Lansing**  
Mount Carmel Health System

**Mr. Sean McCormick**  
The Ohio State University

**Mr. Jim Negron**  
Corna Kokosing Construction

**Fr. Vince Nguyen**  
St. Mary's, St. Ladislav and Corpus Christi Parishes

**Mr. Jeff Powell**  
Brady Ware

**Ms. Erin Shannon**  
White Castle System, Inc.

**Mr. John Tortora**  
Columbus Blue Jackets

**Mr. John Woods**  
The Ohio State University

**Mr. Adam Zaller**  
Cardinal Health

## Mission Statement:

Motivated by faith, Catholic Social Services helps poor and vulnerable seniors and families in central and southern Ohio – regardless of their background – to reach their potential.

We help working-poor families stabilize and attain good jobs, providing economic security for their families and strengthening the central Ohio workforce. We help low-income seniors through a suite of seven programs that help them live independently and age with grace and dignity.

Catholic Social Services clients use their own strengths and leverage the support of the entire community to reach their goals. Our programs help 14,000 people annually in our 23-county region. We partner with hundreds of corporations, public entities, nonprofits, and human service providers to help more CSS clients reach their full potential.

## CORPORATE CONTRIBUTIONS



Your organization can make a significant impact in the lives of seniors and families by contributing to our work in the following ways:

### Invest

- Sponsor events such as Breakfast with the Bishop. 100% of proceeds support CSS programs.
- Financial support

### Volunteer

- Organize a donation drive for food, personal care, or cleaning items for the Our Lady of Guadalupe Center

## INDIVIDUAL CONTRIBUTIONS



You can keep seniors independent and help families thrive in many ways. Please consider supporting us in the following ways:

### Invest

- Annual events such as Breakfast with the Bishop. 100% of proceeds support CSS programs.
- Donate food, personal care, and home goods to stock the shelves for our program clients
- Financial support
- Employee giving match program

### Volunteer

- Pro-bono professional services (financial, ESL, etc.) and skills-based volunteering for clients, office and events
- Board service





**Judy Mobley**  
President and CEO



### GIVING OPPORTUNITIES:

Here are some ways in which community members can support The Children's Hunger Alliance.

- Corporate Giving
- Foundation Giving
- Individual Giving
- Event Sponsorship
- Volunteering
- In-Kind Contributions

### 2022 BOARD OF DIRECTORS

#### Governing Board EXECUTIVE COMMITTEE

- John Kompa** (Chair)  
**Melissa McHenry** (Past Chair)  
**Aaron Ockerman** (Vice Chair)  
**Ryan Hecht** (Treasurer)  
**Nikki Scarpitti** (Secretary)  
**Kelli Berner** (At-Large)  
**Steve Rigdon** (At-Large)  
**Laurie Starner** (At-Large)  
**Dan Williamson** (At-Large)

#### Members

- Masa Abdelhadi  
 Sathu Alagappan  
 Christine Arvay  
 Heather Brockler  
 Jeff Burt  
 Sheldon Clarke  
 Frank Combs  
 Lisa Dodge  
 Steve Forry  
 Abigail Goolsby  
 Jennifer Jarrell  
 Jon Jasper  
 Skyler Kalady  
 Meliss Klorer  
 Brenda Lemon  
 Nicole Loar  
 Dr. Bob Murray  
 Theresa Olson  
 Brett Radulovich  
 Shyam Rajadhyaksha  
 John Singleton  
 Gary Sorrell  
 Ryen Stewart  
 Ellen Berndt (Advisory Member)

# Children's Hunger Alliance

1105 Schrock Rd #505, Columbus, OH 43229 | (614) 341-7700  
[www.childrenshungeralliance.org](http://www.childrenshungeralliance.org) | [4kids@childrenshungeralliance.org](mailto:4kids@childrenshungeralliance.org)



### Our Mission-Who We Are:

Over 400,000 children across Ohio live in food insecure households. That means 1 in 5 children are unsure of their next meal. Founded in 1970, Children's Hunger Alliance is a statewide nonprofit organization dedicated to ending childhood hunger. Simply put, our mission is to provide healthy meals to hungry children, advocate for the welfare of Ohio's youngest citizens and teach nutrition education to those we serve. We partner with organizations throughout Ohio to provide nutritious meals to at-risk children who need them most. Children's Hunger Alliance has a team of 50 professionals throughout the state who are passionate about helping kids in all of Ohio's 88 counties. Our home office is in Columbus, Ohio with regional offices in Cincinnati, Cleveland and Toledo. We are Working Together to FEED OHIO'S KIDS!

### CORPORATE GIVING AND INVOLVEMENT

■ **Philanthropic gifts from corporate partners** across the state are a great investment in Ohio's children. Your contributions will help us provide children the best start in life by improving their overall nutrition and wellness. We work with in-home childcare providers, childcare centers, afterschool and summer programs to ensure wholesome meals are provided to children. Corporate investments also assist us in increasing breakfast participation across Ohio to thousands of children in their schools, and expand weekend meal programs to food insecure children.

■ **Corporations and foundations** can also get involved with Children's Hunger Alliance by being an event sponsor at our annual signature event Menu of Hope or one of our regional events. After two years we are excited to host Menu of Hope in-person with our special guest, entrepreneur, and philanthropist Lauren Bush Lauren as our keynote speaker. Join us to learn about

the challenges facing food insecure children, and celebrate those making a difference in the lives of our most vulnerable citizens. Learn more about Menu of Hope or one of our regional events at <https://childrenshungeralliance.org/events/>.

■ **Volunteers** play a critical role in helping us address food insecurity. By volunteering with Children's Hunger Alliance, you can help us provide food to the children we serve throughout Ohio. Before we can distribute weekend and school break meals to children, they need to be packed and prepared for delivery. Our volunteer opportunities include packing meals at our warehouse, or we offer a mobile volunteer opportunity where we will come to your office for your team to help pack providing for a great team building experience. Learn more at: <https://childrenshungeralliance.org/volunteer/>.

### INDIVIDUAL GIVING AND INVOLVEMENT

If you want to help children living in your local community, consider donating your time, talent or financial gifts to help us feed more kids. Individuals have the opportunity to help Children's Hunger Alliance in many ways, such as:

- **Donating** – any amount can make a difference.
- **Volunteering** – help pack and distribute meals to children in need.
- **Advocating** – when you speak up for children in your community you are giving your voice to those who are too young to advocate for themselves.

■ **Community Fundraiser** – organize your own fundraiser with friends, family and/or your workplace.

Learn more at <https://childrenshungeralliance.org/get-involved/>.



# Community Shelter Board

355 E. Campus View Blvd., Suite 250, Columbus, Ohio 43235 | 614.221.9195  
www.csb.org



## Mission Statement:

Community Shelter Board leads a coordinated, community effort to make sure everyone has a place to call home. CSB is the collective impact organization driving strategy, accountability, collaboration, and resources to achieve the best outcomes for people facing homelessness in Columbus and Franklin County.

Our homelessness prevention, shelter, and housing programs are especially critical as the cost of living continues increasing rapidly and basic needs like food, transportation, and rental payments become a higher burden on the limited budgets of low-income people.

Housing costs are far more than what many working people earn. We are still seeing the effects of the pandemic, marked by 5,000 children served in our network last year – up from 3,000. Many are facing homelessness for the first time, as they struggle to regain stability.

CSB and our network partners are working to keep people safe in shelter and help them return to the stability of housing. And CSB is preventing more families from becoming homeless and identifying their housing crisis sooner.

Join the fight to protect our community's most vulnerable and give hope to men, women, and children facing homelessness. Community Shelter Board will be here until everyone has a place to call home.

## CORPORATE CONTRIBUTIONS

### Corporate Investments

Community Shelter Board brings together diverse organizations to work as a system, rather than as a fragmented set of resources. Last year, more than 760 households in shelters were re-housed and stabilized through our network of care. Our prevention programs helped more than 1,300 households avoid homelessness. We have housed more than 2,300 households that experienced long-term homelessness and disabilities in specialized, supportive housing – saving costs for jails, emergency room visits, and inpatient hospital stays. Ensuring safe and decent housing for individual residents helps move our entire community forward.

With your help, we can make an even greater collective impact to make sure everyone has a place to call home. Join many other corporate entities in making an investment in Community Shelter Board to build a better community for everyone. **Contact Melissa Garver at mgarver@csb.org or 614-715-2543.**

### Event Sponsorships

Under One Roof is Community Shelter Board's signature fundraiser to spark discussion about critical social problems and shed light on innovative solutions to homelessness. The fundraiser was held as a live broadcast from 2020 to 2022, in response to the COVID-19 pandemic and the need to continue raising dollars for homeless and housing programs. Under One Roof is coming back in spring 2023 as an evening live event. Corporate sponsors, individual donors, local elected officials, policymakers, and industry and community leaders have joined in years past the community discussions we sparked at the Under One Roof event. We expect to have more than 800 people join us to raise funds and celebrate our community's collective impact toward rebuilding the lives of those experiencing homelessness.

**Sponsorships are available at all levels. Contact Katie Ocasio at kocasio@csb.org or 614-715-2524.**



## INDIVIDUAL CONTRIBUTIONS

### ■ Help us get families home for the holidays

No child should spend the holidays in a shelter. Help us get families home for the holidays. Every investment means more families in our community will have a place to call home for the holidays and beyond. Gifts will be matched through Dec. 31, doubling your impact for families in need. If you're thankful to have a safe, warm home, make a gift today at [csb.org](http://csb.org) or text 2022home to 91999.

### ■ Become a Housing Heroes monthly donor

Become a monthly donor today and join our incredible team of Housing Heroes committed to rebuilding the lives of our neighbors in need through stable housing. Your recurring gift will provide reliable, sustainable funding that is put to immediate action for those in need. By giving monthly, you can customize your gift amount and extend your impact over time at a pace that is right for you. Monthly gifts are automated, making

giving easy, and you can cancel or adjust your gift amount at any time.

We need heroes more than ever during this time of economic instability for those we serve. **Please join today at [csb.org](http://csb.org) and click donate monthly.**

### ■ Charitable gift plans

Include Community Shelter Board in your charitable giving plan. To learn more, contact Katie Ocasio at [kocasio@csb.org](mailto:kocasio@csb.org) or 614-715-2524.



**Michelle Heritage**  
Executive Director

**communityshelterboard**

Until everyone has a place to call home

### GIVING OPPORTUNITIES:

Join the fight to protect our community's most vulnerable.

- Corporate giving: program support, event sponsorship
- Individual giving: one-time, monthly, charitable gift plans

### 2022 BOARD OF DIRECTORS

**Barbara H. Benham**, Chief Public Affairs Officer, Huntington

**Jon Card**, SVP, Strategic Client Sales & Support, Safelite AutoGlass

**Susan Carroll-Boser**, VP of Technology, White Castle

**Amy Dawson**, Executive Vice President, Fahlgren Mortine

**Sonya Higginbotham**, Vice President—Corporate Communications & Brand Management, Worthington Industries, Inc.

**Erik Janas**, Deputy County Administrator, Franklin County Board of Commissioners

**Andy Keller**, Community Volunteer

**Kittrella Mikell**, Tax Senior Manager, KPMG

**Timothy T. Miller**, VP & General Counsel, Crane Group Co.

**Sheila Prillerman**, Retired veteran & homeless advocate

**Renee Shumate**, Manager, External Affairs, American Electric Power

**Stephen M. Smith**, SVP Product Integrity, Bath & Body Works

**Élise Spriggs**, Senior Vice President, Associate & External Relations, State Auto Insurance Companies

**Michael Stevens**, Director, Department of Development, City of Columbus

**Sherrice Thomas**, VP of Diversity, Equity, Inclusion & Access, Columbus Chamber

**Jonathan D. Welty**, Executive Vice President, Ohio Capital Corporation for Housing

**Nathan P. Wymer**, AVP, Government Relations, Nationwide





# THE LIST

Compiled by Robin Smith  
614-220-5444  
rlsmith@bizjournals.com

## CORPORATE CITIZENSHIP

FIRST PUBLISHED JUNE 24, 2022

RANKED BY 2021 CASH CONTRIBUTIONS TO CENTRAL OHIO ORGANIZATIONS

Company Website	Address Phone	2021 cash contributions to Central Ohio organizations	2021 in-kind contributions to Central Ohio organizations <sup>1</sup>	2021 Central Ohio employee volunteer hours <sup>1</sup>	Central Ohio employees <sup>2</sup>	Top local executive
<b>1</b> Nationwide nationwide.com	1 W. Nationwide Blvd. Columbus, OH 43215 614-249-7111	\$32 million	\$0	32,600	11,000	Kirt Walker
<b>2</b> Battelle battelle.org	505 King Ave. Columbus, OH 43201 800-201-2011	\$14.8 million	NA	NA	1,650	Lewis Von Thaur
<b>3</b> JPMorgan Chase & Co. jpmorganchase.com/columbus	1111 Polaris Pkwy. Columbus, OH 43240 800-935-9935	\$6.58 million	NA	2,952	16,896	Corrine Burger
<b>4</b> Big Lots Inc. biglots.com	4900 E. Dublin Granville Rd. Columbus, OH 43081 614-278-6800	\$6.21 million	\$703,404	1,753	1,784	Bruce Thorn
<b>5</b> Cardinal Health Inc. cardinalhealth.com	7000 Cardinal Pl. Dublin, OH 43017 614-757-5000	\$4.14 million	\$0	23,228	3,969	Michael Kaufmann
<b>6</b> Huntington Bancshares Inc. huntington.com	41 S. High St. Columbus, OH 43215 614-480-2265	\$3.98 million	NA	6,047	4,984	Stephen Steinour
<b>7</b> Kroger Co. kroger.com	4111 Executive Pkwy. Westerville, OH 43081 614-898-3200	\$3.84 million	\$2.73 million	NA	18,058	Dana Zurcher
<b>8</b> White Castle whitecastle.com	555 Edgar Waldo Way Columbus, OH 43215 614-228-5781	\$2.79 million	\$8,000	2,000	698	Lisa Ingram, ingraml@whitecastle.com
<b>9</b> Safelite Group Inc. safelite.com	7400 Safelite Way Columbus, OH 43235 614-210-9000	\$2.3 million	NA	9,696	2,029	Renee Cacchillo, renee.cacchillo@safelite.com
<b>10</b> Encova Insurance encova.com	471 E. Broad St. Columbus, OH 43215 844-362-6821	\$1.98 million	NA	NA	410	Thomas Obrokta Jr.
<b>11</b> CoverMyMeds covermymeds.com	910 John St. Columbus, OH 43222 866-452-5017	\$1.75 million	\$250,000	1,975	1,638	Nathan Mott
<b>12</b> M/I Homes Inc. mihomes.com	4131 Worth Ave. #500 Columbus, OH 43219 614-418-8000	\$1.59 million	NA	NA	284	Robert Schottenstein
<b>13</b> Grange Insurance grangeinsurance.com	671 S. High St. Columbus, OH 43206 614-315-0109	\$1.57 million	\$16,082	3,987	734	John Ammendola, ammendolaj@grangeinsurance.com
<b>14</b> The Robert Weiler Company rweiler.com	10 N. High St. #401 Columbus, OH 43215 614-221-4286	\$1.5 million	NA	NA	20	Bob Weiler Sr., bob@rweiler.com Skip Weiler, skip@rweiler.com
<b>15</b> The PNC Financial Services Group Inc. pnc.com	155 E. Broad St. Columbus, OH 43215 614-463-6963	\$1.31 million	NA	449	NA	Mary Auch, mary.auch@pnc.com
<b>16</b> Greif Inc. greif.com	425 Winter Rd. Delaware, OH 43015 740-549-6000	\$1.29 million	NA	292	384	Ole Rosgaard
<b>17</b> Columbus Metropolitan Housing Authority cmhanet.com	880 E. 11th Ave. Columbus, OH 43211 614-421-6100	\$1.2 million	NA	280	125	Charles Hillman, atyson@cmhanet.com
<b>18</b> Fifth Third Bank 53.com	21 E. State St. Columbus, OH 43215 614-744-5909	\$1.02 million	NA	3,492	478	Francie Henry
<b>19</b> Crane Group Co. cranegroup.com	330 W. Spring St. #200 Columbus, OH 43215 614-754-3000	\$975,000	NA	NA	250	Tanny Crane
<b>20</b> Columbia Gas of Ohio columbiagasohio.com	290 W. Nationwide Blvd. Columbus, OH 43215 614-460-6000	\$848,177	\$0	758	1,379	Vince Parisi
<b>21</b> Discover Financial Services LLC discoverfinancial.com	6500 New Albany Rd. E New Albany, OH 43054 614-283-1000	\$798,174	NA	NA	1,776	Roger Hochschild
<b>22</b> Interim HealthCare interim-health.com	300 W. Wilson Bridge Rd. #250 Worthington, OH 43085 614-436-9404	\$718,900 <sup>3</sup>	\$1,000	50	395	Tom DiMarco, tdimarco@interim-health.com Christine Oswald, coswald@interim-health.com
<b>23</b> Advanced Drainage Systems Inc. adspipe.com	4640 Trueman Blvd. Hilliard, OH 43026 614-658-0050	\$650,000	NA	NA	350	D. Scott Barbour
<b>24</b> Vorys Sater Seymour and Pease LLP vorys.com	52 E. Gay St. Columbus, OH 43215 614-464-6400	\$649,750	NA	NA	422	Michael Martz, mdmartz@vorys.com
<b>25</b> Thompson Concrete thompsonconcrete.com	6182 Winchester Rd. Carroll, OH 43112 740-756-7256	\$619,000	\$92,000	2,000	300	Scott Thompson

<sup>1</sup> NA-Not answered or not applicable.

<sup>2</sup> Includes full- and part-time employees.

<sup>3</sup> Charitable contributions are handled through the DiMarco Family Foundation.

### ► CLOSER LOOK

## \$105.73M

Total 2021 cash contributions to Central Ohio organizations, all listed companies.

## \$8.42M

Total 2021 in-kind contributions to Central Ohio organizations, all listed companies.

### TOP LISTED COMPANIES BY 2021 CENTRAL OHIO IN-KIND CONTRIBUTIONS

Kroger	\$2.73M
Columbus Blue Jackets Hockey Club	\$1.8M
Easton	\$867,275
Big Lots	\$703,404
Columbus Young Professionals Club	\$328,800
CoverMyMeds	\$250,000
Crabbe Brown & James	\$200,000
Ologie	\$200,000
Champion Trading Group	\$125,000
Grossman Law Offices	\$100,000
Value City Furniture	\$100,000
Licking Memorial Health Systems	\$96,854
Thompson Concrete	\$92,000
TechR2	\$87,000
Roosters	\$80,470

### ABOUT THE LIST

Information on The List was supplied by individual companies through questionnaires and could not be independently verified by Columbus Business First.

Contributions of more than \$1 million are automatically rounded; however, rankings are based on unrounded numbers. Companies are sorted first by 2021 cash contributions to Central Ohio organizations, then by 2021 in-kind contributions to Central Ohio organizations. In case of ties, companies are listed alphabetically.

### SUBSCRIBERS CAN ACCESS LISTS ONLINE

Subscribers can access all lists online. Sign in at ColumbusBusinessFirst.com, choose Lists & Leads in the menu at the top of the page.



## THE LIST

Compiled by Robin Smith  
614-220-5444  
rlsmith@bizjournals.com

## CORPORATE CITIZENSHIP

FIRST PUBLISHED JUNE 24, 2022

RANKED BY 2021 CASH CONTRIBUTIONS TO CENTRAL OHIO ORGANIZATIONS

Company Website	Address Phone	2021 cash contributions to Central Ohio organizations	2021 in-kind contributions to Central Ohio organizations <sup>1</sup>	2021 Central Ohio employee volunteer hours <sup>1</sup>	Central Ohio employees <sup>2</sup>	Top local executive
<b>26</b> The Champion Companies thechampioncompanies.com	380 Polaris Pkwy. #135 Westerville, OH 43082 614-895-6811	\$570,457	NA	50	123	Brian Yeager Michelle Yeager-Thornton
<b>27</b> Installed Building Products Inc. installedbuildingproducts.com	495 S. High St. #50 Columbus, OH 43215 614-221-3399	\$527,000	\$0	0	343	Jeffrey Edwards
<b>28</b> Diamond Hill diamond-hill.com	325 John H. McConnell Blvd. #200 Columbus, OH 43215 614-255-3333	\$472,328	\$10,050	755	102	Heather Brilliant, hbrilliant@diamond-hill.com
<b>29</b> Licking Memorial Health Systems lmhealth.org	1320 W. Main St. Newark, OH 43055 220-564-4000	\$457,546	\$96,854	2,041	2,027	Robert Montagnese
<b>30</b> Feazel feazelinc.com	7895 Walton Pkwy. New Albany, OH 43054 614-782-5489	\$442,222	\$64,310	80	86	Leo Ruberto Ross Appeldorn
<b>31</b> Easton eastontowncenter.com	160 Easton Town Center Columbus, OH 43219 614-416-7000	\$419,479	\$867,275	1,287	135	Jennifer Peterson
<b>32</b> Value City Furniture vcf.com	4300 E. 5th Ave. Columbus, OH 43219 614-449-4200	\$401,000	\$100,000	NA	411	Jonathan Schottenstein
<b>33</b> Designer Brands Inc. designerbrands.com	810 DSW Dr. Columbus, OH 43219 614-237-7100	\$382,300	NA	NA	931	Roger Rawlins
<b>34</b> Columbus Blue Jackets Hockey Club bluejackets.com	200 W. Nationwide Blvd. Columbus, OH 43215 614-246-4625	\$378,262	\$1.8 million	198	245	Mike Priest
<b>35</b> DHL Supply Chain - North America (U.S. and Canada) logistics.dhl.com	360 Westar Blvd. Westerville, OH 43082 614-865-8500	\$374,200	\$15,000	1,917	3,490	Scott Sureddin
<b>36</b> Wendy's Company wendys.com	1 Dave Thomas Blvd. Dublin, OH 43017 614-764-3100	\$370,000	NA	NA	1,000	Todd Penegor
<b>37</b> Turner Construction Co. turnerconstruction.com/ columbus	262 Hanover St. Columbus, OH 43215 614-984-3000	\$363,114	NA	NA	440	Brian Mooney, bmooney@tcco.com
<b>38</b> Donatos Pizza donatos.com	935 Taylor Station Rd. Columbus, OH 43230 614-416-7700	\$307,370	\$60,105	NA	1,896	Tom Krouse Kevin King
<b>39</b> Hexion Inc. hexion.com	180 E. Broad St. Columbus, OH 43215 614-225-4000	\$306,162	\$23,000	300	196	Craig Rogerson, karen.vanhorn@hexion.com
<b>40</b> Accenture accenture.com	400 W. Nationwide Blvd. #100 Columbus, OH 43215 614-629-2411	\$289,380	\$15,000	875	770	Paula O'Reilly, paula.m.oreilly@accenture.com
<b>41</b> Messer Construction Co. messer.com	3705 Business Park Dr. Columbus, OH 43204 614-275-0141	\$267,854	NA	NA	165	Erin Thompson
<b>42</b> State Farm Insurance statefarm.com	1006 Harrison Park Pl. Columbus, OH 43201 207-712-6369	\$230,000	NA	NA	1,200	Mary Kay Quist
<b>43</b> Donald R. Kenney & Co. Realty drk-realty.com	470 Olde Worthington Rd. #100 Westerville, OH 43082 614-540-2404	\$225,000	NA	NA	450	Donald Kenney Sr., kperly@drkmetro.com
<b>44</b> Bailey Cavaleri LLC baileycav.com	10 W. Broad St. #2100 Columbus, OH 43215 614-221-3155	\$218,000	\$25,000	NA	81	Dan Bailey, dbailey@baileycav.com Robert Dunn, rdunn@baileycav.com
<b>45</b> Continental Office continentaloffice.com	5061 Freeway Dr. E Columbus, OH 43229 614-262-5010	\$208,405	\$35,283	420	150	Ira Sharfin, isharfin@continentaloffice.com
<b>46</b> ODW Logistics odwlogistics.com	400 W. Nationwide Blvd. #200 Columbus, OH 43215 614-549-5000	\$191,859	\$14,799	943	918	John Ness
<b>47</b> Avaap avaap.com	1400 Goodale Blvd. #100 Columbus, OH 43212 614-796-0090	\$180,000	\$13,500	1,850	145	Mike Stevenson, mike.stevenson@avaap.com
<b>48</b> Express Wash Concepts expresswashconcepts.com	13375 National Rd. SW Etna, OH 43068 614-751-9274	\$163,201	\$40,000	100	260	John Roush, john@expresswashconcepts.com
<b>49</b> Rockbridge www.rockbridgecapital.com	4100 Regent St. #G Columbus, OH 43219 614-246-2400	\$155,374	\$35,522	745	66	James Merkel
<b>50</b> Heartland Bank heartland.bank	430 N. Hamilton Rd. Whitehall, OH 43213 614-337-4600	\$103,986	\$22,500	799	278	G. Scott McComb

<sup>1</sup> NA-Not answered or not applicable.<sup>2</sup> Includes full- and part-time employees.

## CLOSER LOOK

**128,702**Total 2021 Central Ohio  
employee volunteer hours,  
all listed companies.TOP LISTED  
COMPANIES BY  
2021 CENTRAL  
OHIO EMPLOYEE  
VOLUNTEER HOURS

Nationwide	32,600
Cardinal Health	23,228
Safelite Group	9,696
Huntington Bancshares	6,047
Grange Insurance	3,987
Fifth Third Bank	3,492
Shai Hess Commercial Real Estate	3,107
JPMorgan Chase & Co.	2,952
Renier Construction	2,315
FST Logistics	2,179
Licking Memorial Health Systems	2,041
Thompson Concrete	2,000
White Castle	2,000
CoverMyMeds	1,975
DHL Supply Chain - North America	1,917

SUBSCRIBERS CAN  
ACCESS LISTS ONLINESubscribers can access  
all lists online. Sign in at  
ColumbusBusinessFirst.com,  
choose Lists & Leads in the  
menu at the top of the page.NEED A COPY  
OF THE LIST?For information on obtaining  
reprints, web permissions  
and commemorative  
plaques, call 877-397-  
5134. More information  
can be found online at  
ColumbusBusinessFirst.com  
by clicking the "Store" tab  
near the bottom of the site.WANT TO BE  
ON THE LIST?If you wish to be surveyed  
when The List is next  
updated, or if you wish to  
be considered for other  
Lists, email your contact  
information to Robin Smith  
at rlsmith@bizjournals.com.



## THE LIST

Compiled by Robin Smith  
614-220-5444  
rlsmith@bizjournals.com

## CORPORATE CITIZENSHIP

FIRST PUBLISHED JUNE 24, 2022

RANKED BY 2021 CASH CONTRIBUTIONS TO CENTRAL OHIO ORGANIZATIONS

Company Website	Address Phone	2021 cash contributions to Central Ohio organizations	2021 in-kind contributions to Central Ohio organizations <sup>1</sup>	2021 Central Ohio employee volunteer hours <sup>1</sup>	Central Ohio employees <sup>2</sup>	Top local executive
<b>51</b> Kaufman Development livekaufman.com	30 Warren St. Columbus, OH 43215 614-299-9200	\$100,000	\$20,000	775	27	Brett Kaufman Frank Sasso
<b>52</b> First Commonwealth Bank fcbanking.com	200 Civic Center Dr. #825 Columbus, OH 43215 614-241-5600	\$98,230	\$0	1,439	123	Jason Baker, jbaker@fcbanking.com
<b>53</b> Lower.com lower.com	8131 Smith's Mill Rd. 4th Fl. New Albany, OH 43054 888-645-6937	\$95,850	\$6,440	376	800	Dan Snyder
<b>54</b> OCLC Inc. oclc.org	6565 Kilgour Pl. Dublin, OH 43017 614-764-6000	\$95,000	\$0	250	729	Skip Prichard
<b>55</b> GBQ Partners LLC gbq.com	230 West St. #700 Columbus, OH 43215 614-221-1120	\$93,000	\$0	701	156	Darci Congrove, dcongrove@gbq.com
<b>56</b> The Basement Doctor mybasementdoctor.com	13659 E. Main St. Reynoldsburg, OH 43068 877-264-9050	\$89,736	\$0	1,432	103	Ron Greenbaum
<b>57</b> BakerHostetler bakerlaw.com	200 Civic Center Dr. #1200 Columbus, OH 43215 614-228-1541	\$88,000	NA	NA	104	Mark Hatcher, mhatcher@bakerlaw.com
<b>58</b> The Edwards Group at Morgan Stanley fa.morganstanley.com/ theedwardsgroupsb	4449 Easton Way #300 Columbus, OH 43219 614-473-2401	\$85,975	\$10,500	345	12	Brian Edwards, brian.j.edwards@morganstanley.com
<b>59</b> Perez Morris perez-morris.com	8000 Ravine's Edge Ct. #300 Columbus, OH 43235 614-431-1500	\$81,800	\$10,000	600	38	Sarah Perez, sperez@perez-morris.com
<b>60</b> Budros Ruhlin & Roe b-r-r.com	1801 Watermark Dr. #300 Columbus, OH 43215 614-481-6900	\$81,299	NA	NA	59	John Schuman, john.schuman@b-r-r.com Daniel Roe, daniel.roe@b-r-r.com
<b>61</b> Roosters roosterswings.com	6140 Dublin Rd. Dublin, OH 43017 614-761-1572	\$79,680	\$80,470	NA	1,746	Dan Ponton, danponton@roosterswings.com
<b>62</b> Ernst & Young LLP ey.com	800 Yard St. #200 Grandview Heights, OH 43212 614-224-5678	\$76,550	NA	NA	399	Dan Valerio, daniel.valerio@ey.com
<b>63</b> Status Solutions LLC statusolutions.com	999 County Line Rd. W #A Westerville, OH 43082 866-846-7272	\$66,605	NA	NA	88	Mike MacLeod, mmacleod@statusolutions.com
<b>64</b> TechR2 LLC techr2.com	12477 Broad St. SW Pataskala, OH 43062 614-322-2222	\$65,000	\$87,000	240	38	Sepp Rajaie, srajaie@techr2.com
<b>65</b> Miles-McClellan Construction Company Inc. mmbuildings.com	2100 Builders Pl. Columbus, OH 43204 614-487-7744	\$65,000	NA	NA	97	Matthew McClellan
<b>66</b> FCBank, a division of CNB Bank fcbank.bank	6600 N. High St. Worthington, OH 43085 614-438-5858	\$64,200	NA	311	48	Jenny Saunders, Jenny.Saunders@FCBank.bank
<b>67</b> Hylant hylant.com	565 Metro Pl. S #450 Dublin, OH 43017 614-932-1200	\$64,134	NA	NA	56	Christopher Godley
<b>68</b> MES Inc. mesinc.com	625 Bear Run Lane Lewis Center, OH 43035 740-201-8112	\$64,000	\$25,000	200	44	Hiten Shah, hshah@mesinc.net
<b>69</b> Shai Hess Commercial Real Estate LLC shai-hess.com	4009 Columbus Rd. #333 Granville, OH 43023 740-587-7441	\$60,000	\$23,000	3,107	7	J. Shai III, pshai@shai-hess.com Brandon Hess, bhess@shai-hess.com
<b>70</b> Preferred Living livepreferred.com	750 Communications Pkwy. #250 Columbus, OH 43214 614-901-2400	\$57,000	NA	NA	77	Michael Kenney Nick King
<b>71</b> Crabbe Brown & James LLP cbjlawyers.com	500 S. Front St. #1200 Columbus, OH 43215 614-228-5511	\$52,000	\$200,000	NA	26	Larry James, ljames@cbjlawyers.com
<b>72</b> McCarthy & Cox Retirement and Estate Specialists LLC mccarthyandcox.com	127 W. 5th St. Marysville, OH 43040 937-644-0351	\$50,501	\$5,000	200	20	James Cox, jim@mccarthyandcox.com Thomas McCarthy, tom@mccarthyandcox.com
<b>73</b> Grossman Law Offices grossmanlawoffices.com	32 W. Hoster St. #100 Columbus, OH 43215 614-221-7711	\$50,000	\$100,000	1,000	21	Andrew Grossman, asg@grossman-law.com
<b>74</b> Marker Inc. buildwithmarker.com	2011 Riverside Dr. Columbus, OH 43221 614-754-8349	\$49,459	\$18,500	110	45	Alison Laine Marker, amarker@buildwithmarker.com
<b>75</b> DesignGroup designgroup.us.com	515 E. Main St. Columbus, OH 43215 614-255-0515	\$47,250	\$0	220	47	Sherm Moreland, smoreland@designgroup.us.com

<sup>1</sup> NA-Not answered or not applicable.<sup>2</sup> Includes full- and part-time employees.

## CLOSER LOOK

95,143

Total Central Ohio employees, all listed companies.

## LARGEST LISTED COMPANIES BY TOTAL CENTRAL OHIO EMPLOYEES

Kroger	18,058
JPMorgan Chase & Co.	16,896
Nationwide	11,000
Huntington Bancshares	4,984
Cardinal Health	3,969
DHL Supply Chain - North America	3,490
Roosters	2,366
Safelite Group	2,029
Licking Memorial Health Systems	2,027
Donatos Pizza	1,896
Big Lots	1,784
Discover Financial Services	1,776
Battelle	1,650
CoverMyMeds	1,638
Quantum Health	1,498

## SMALLEST LISTED COMPANIES BY TOTAL CENTRAL OHIO EMPLOYEES

Champion Trading Group	3
Yeager Communities	3
Trinity Financial Advisors	5
Shai Hess Commercial Real Estate	7
Belle Communication	8
Waller Financial Planning Group	9
Columbus Young Professionals Group	10
The Edwards Group at Morgan Stanley	12
MCR Medical	15
PDS Planning	15
The Robert Weiler Company	18
McCarthy & Cox Retirement and Estate Specialists	20
Grossman Law Offices	21
Crabbe Brown & James	26
Kaufman Development	27

## THE LIST

Compiled by Robin Smith  
614-220-5444  
rlsmith@bizjournals.com

## CORPORATE CITIZENSHIP

FIRST PUBLISHED JUNE 24, 2022

RANKED BY 2021 CASH CONTRIBUTIONS TO CENTRAL OHIO ORGANIZATIONS

Company Website	Address Phone	2021 cash contributions to Central Ohio organizations	2021 in-kind contributions to Central Ohio organizations <sup>1</sup>	2021 Central Ohio employee volunteer hours <sup>1</sup>	Central Ohio employees <sup>2</sup>	Top local executive
<b>76</b> TrueCore Federal Credit Union truecore.org	215 Deo Dr. Newark, OH 43055 740-345-6608	\$47,167	NA	765	62	Jay Young Jason Hall, jhall@truecore.org
<b>77</b> Yeager Communities LLC yeagerrealestategroup.com	1967 Sawbury Blvd. Columbus, OH 43235 614-734-0043	\$47,000	\$0	0	3	Qasim Mahmood, kasem@3qscpa.com David Yeager
<b>78</b> Del-Co Water Company Inc. delcowater.org	6658 Olentangy River Rd. Delaware, OH 43015 740-548-7746	\$46,015	\$10,500	1,000	90	Glenn Marzluf, gmarzluf@delcowater.com
<b>79</b> FST Logistics Inc. fstlogistics.com	5025 Bradenton Ave. #B Dublin, OH 43017 614-529-7900	\$43,333	\$5,000	2,179	400	Matt Hartman, mhartman@fstlogistics.com
<b>80</b> Renier Construction renier.com	2164 Citygate Dr. Columbus, OH 43219 614-866-4580	\$40,000	\$2,500	2,315	49	Brian Reynolds William Heifner
<b>81</b> PricewaterhouseCoopers LLP pwc.com	41 S. High St. #2500 Columbus, OH 43215 614-225-8700	\$39,050	\$0	1,544	250	Arthur Scherbel
<b>82</b> Burns & McDonnell burnsmcd.com	530 W. Spring St. #200 Columbus, OH 43215 614-453-7800	\$38,326	\$1,000	0	59	Darrell Butler
<b>83</b> Hope Timber Pallet & Recycling Inc. hopetimberpallet.com	141 Union St. Newark, OH 43055 740-344-1788	\$38,000	NA	100	100	Thomas Harvey, tharvey@hopetimber.com
<b>84</b> Champion Trading Group championtg.com	P.O. Box 9422 Bexley, OH 43209	\$37,000	\$125,000	789	3	Kyle Barger
<b>85</b> Charleys Philly Steaks charleys.com	2500 Farmers Dr. #140 Columbus, OH 43235 614-923-4700	\$36,317	NA	NA	245	Charley Shin Candra Alisiswanto
<b>86</b> Ologie LLC ologie.com	447 E. Main St. Columbus, OH 43215 614-221-1107	\$32,500	\$200,000	NA	73	Beverly Ryan, bryan@ologie.com
<b>87</b> Columbus Young Professionals Club cypclub.com	175 S. 3rd St. #200 Columbus, OH 43215 614-579-9390	\$32,100	\$328,800	1,451	10	Derek Grosso, derek@cypclub.com
<b>88</b> Loeb Electric loebelectric.com/	1800 E. 5th Ave. Columbus, OH 43219 614-294-6351	\$30,836	\$2,482	30	284	Charles Loeb
<b>89</b> Quantum Health quantum-health.com	5240 Blazer Pkwy. Dublin, OH 43017 800-257-2038	\$29,000	NA	1,800	1,498	Zane Burke
<b>90</b> BTTS Holdings Inc. btts.biz	23 E. College Ave Westerville, OH 43081 614-255-6456	\$27,677	\$55,600	306	228	John Brooks
<b>91</b> Trinity Financial Advisors LLC tfadvisors.com	760 Communications Pkwy. #200 Columbus, OH 43214 614-848-7667	\$27,200	\$0	40	5	Geoffrey Biehn, gbiehn@tfadvisors.com
<b>92</b> Waller Financial Planning Group Inc. waller.com	941 Chatham Ln. #212 Columbus, OH 43221 614-457-7026	\$27,000	\$0	0	9	Jason Eliason, jeliason@waller.com Jason Farris, jfarris@waller.com
<b>93</b> Palmer-Donavin palmerdonavin.com	3210 Centerpoint Dr. Grove City, OH 43123 614-317-0100	\$26,320	\$120	320	210	Robyn Pollina, robyn.pollina@palmerdonavin.com
<b>94</b> Belle Communication bellectcommunication.com	175 S. 3rd St. #200 Columbus, OH 43215 614-304-1463	\$25,103	\$61,367	235	8	Kate Finley
<b>95</b> Barnes & Thornburg LLP btlaw.com	41 S. High St. #3300 Columbus, OH 43215 614-628-0096	\$23,478	NA	NA	44	William Nolan, bill.nolan@btlaw.com
<b>96</b> PDS Planning Inc. pdsplanning.com	475 Metro Pl. S #460 Dublin, OH 43017 614-481-8449	\$22,000	\$1,500	400	15	Rita Itsell, ritsell@pdsplanning.com Jamie Menges, jmenges@pdsplanning.com
<b>97</b> MCR Medical mcrmedical.com	1550 N. Wilson Rd. Columbus, OH 43204 614-782-2100	\$21,600	\$0	24	15	Charles Morrison III
<b>98</b> Air Force One Inc. airforceone.com	5810 Shier Rings Rd. Dublin, OH 43016 614-889-0121	\$19,250	\$200	80	221	Greg Guy
<b>99</b> Fusion Alliance fusionalliance.com	8940 Lyra Dr. #220 Columbus, OH 43240 614-825-8000	\$18,850	\$3,100	48	90	Rick Mariotti, rmariotti@fusionalliance.com Tom Campbell
<b>100</b> Benesch beneschlaw.com	41 S. High St. #2600 Columbus, OH 43215 614-223-9300	\$18,535	NA	52	54	Frank Carsonie, fcarsonie@beneschlaw.com

<sup>1</sup> NA-Not answered or not applicable.<sup>2</sup> Includes full- and part-time employees.

## CLOSER LOOK

## LISTED COMPANIES BY SIZE

Extra large (250 or more local employees)	44
Small (1-49 local employees)	23
Large (100-249 local employees)	19
Medium (50-99 local employees)	14

## OLDEST LISTED COMPANIES BY CENTRAL OHIO FOUNDING YEAR

Huntington Bancshares	1866
JPMorgan Chase & Co.	1868
Columbus Gas of Ohio	1880
Kroger	1883
Licking Memorial Health Systems	1898

## NEWEST LISTED COMPANIES BY CENTRAL OHIO FOUNDING YEAR

Burns & McDonnell	2017
Champion Trading Group	2016
FCBank	2016
Lower.com	2014
Belle Communication	2013
Kaufman Development	2013

## ABOUT THE LIST

Information on The List was supplied by individual companies through questionnaires and could not be independently verified by Columbus Business First. Contributions of more than \$1 million are automatically rounded; however, rankings are based on unrounded numbers. Companies are sorted first by 2021 cash contributions to Central Ohio organizations, then by 2021 in-kind contributions to Central Ohio organizations. In case of ties, companies are listed alphabetically.

## WANT TO BE ON THE LIST?

If you wish to be surveyed when The List is next updated, or if you wish to be considered for other Lists, email your contact information to Robin Smith at [rlsmith@bizjournals.com](mailto:rlsmith@bizjournals.com).





**Jill Hofmans**  
Executive Director

### GIVING OPPORTUNITIES:

Here are some ways in which community members can support the Conway Center for Family Business.

- **Center Membership** – Membership provides access to highly relevant, topical, and original programming that helps members learn, stay informed, and share experiences with their peers
- **Donations** – All donations support our educational programs and peer groups
- **Service Provider Membership** – Service Providers are the experts we rely on to help family-owned businesses learn and grow
- **Estate Donations** – Legacy and planned giving gifts are always welcome
- **Family Business Awards & Expo** – Join us for a luncheon celebrating family business success
- **Golf Outing** – Each summer, we hit the links to raise funds for our educational programs

### ADVISORY BOARD

#### Chairman

J. Richard Emens, Partner  
Emens Wolper Jacobs & Jasin Law Firm; Co-Founder, Conway Center for Family Business

#### President

Bea Wolper, CEO  
Emens Wolper Jacobs & Jasin Law Firm; Co-Founder, Conway Center for Family Business

#### Executive Director

Jill Hofmans,  
Conway Center for Family Business

#### Advisors

\*Board of Trustee member

**Suzanne Amstutz**, Owner  
Ohio Power Tool

**James D. Bishop**, Financial Advisor  
Morgan Stanley

**Kelly Borth**, President  
GREENCREST

**Chris Converse**, President  
Converse Electric

**Steve Conway\***  
Nucor Steel Marion

**Joanne Dager**, Vice President  
Velvet Ice Cream

**Jennifer Griffith**, Regional President  
First Merchants Bank

**Ken Heiberger**, Founder\*  
Heiberger Paving

**Karen Hockstad**, Partner\*  
Dinsmore & Shohl

**Lisa Jolley, J.D.**, Director of Donor Services and Development  
The Columbus Foundation

**Laurie McEnery**, CEO/Controller  
MAC Construction

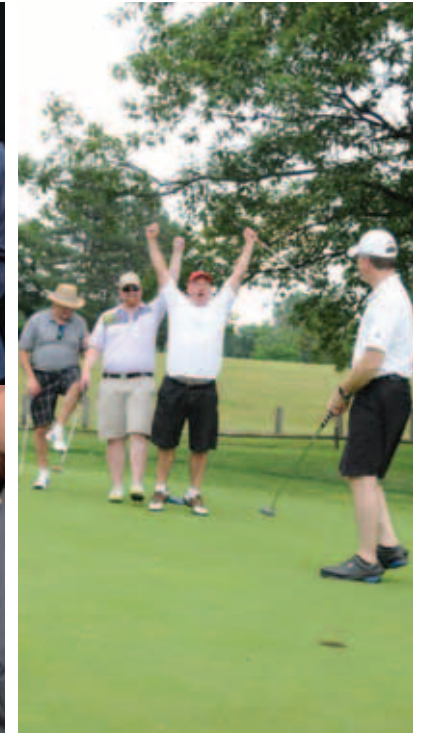
**Daniel Overmyer, CIA**, Partner  
Overmyer Hall Associates

**Chris Reinke**, President  
Rider + Reinke Financial Group

**Michael Schoedinger**, President  
Schoedinger Funeral and Cremation Service

# Conway Center for Family Business

PO Box 361106, Columbus OH 43236 | 614-253-4820  
FamilyBusinessCenter.com | Info@FamilyBusinessCenter.com



### Mission Statement:

The Mission of the Conway Center for Family Business is:

- To help family businesses remain profitable and successful
- To assist family business owners with the transition of their business to the next generations
- To celebrate the accomplishments of outstanding family businesses within our community; and
- To increase awareness of the positive impact family businesses have on the Central Ohio economy

## CORPORATE OPPORTUNITIES

Service Provider membership gives companies and their employees the opportunity to build relationships, share ideas, and enhance their company's reputation through visibility and recognition.

- **Service Provider membership** provides your business the opportunity to share your expertise with Central Ohio family businesses at our educational programs

- **Awards Sponsorship** – Our awards program is a great way to showcase your business to some of Central Ohio's most influential business and community leaders

- **Golf Outing** – Sponsorship of hole signs, beverage carts, and the overall event helps us to reach more family businesses throughout the year

## INDIVIDUAL OPPORTUNITIES

Conway Center members have access to a wide array of educational programs, peer groups, social events, and resources that help them grow professionally, build relationships, share ideas, and develop opportunities.

- **Center Membership** – Family business membership is open to any privately held, family-controlled company that employs two or more family members

- **Family Business Awards** – Nominate a deserving family business, including your own, and join us for a luncheon that celebrates family business success and longevity

- **Expo** – Open only to Conway Center members and honorees and held in conjunction with the Awards program – a great way to showcase your business to 500+ Central Ohio business and community leaders

- **Golf Outing** – Family businesses and Service Providers enjoy a golf scramble, lunch, and a reception to help us raise funds for our programs

- **Legacy Donations** – Individual legacy donations ensure that the Conway Center stays viable to assist family businesses for generations to come



# Friends of CASA of Franklin County, Ohio

7652 Sawmill Rd., #154 | Dublin, OH 43016 | (614) 401-0666  
friendscasafranklincty@gmail.com | www.friendsofcasafranklincountyohio.com



Our work helps children as they grow

Often, CASA Guardians ad Litem help siblings from the same family who are abused and neglected.

[upper right] Students at Broadleigh Elementary school in Columbus invited Friends board president Tom Barry to come and talk about child abuse and neglect and what CASA and its volunteers do.

[lower right] Employees from Huntington Bank attending a volunteer fair at which Friends was present and sharing information about what the volunteer Guardians ad Litem do.

## Mission Statement:

The mission of Friends of CASA of Franklin County, Ohio is to serve child victims of abuse and neglect by providing community education and outreach, supporting Court Appointed Special Advocates of Franklin County in advocating for such children in court, building financial resources to impact and expand such purposes, and advancing the recruitment, training, and retention of volunteer advocates.

Ohio law requires that all child victims of abuse and neglect be appointed a Guardian ad Litem (GAL) – and hundreds of these children are assigned by the Franklin County Courts to a volunteer GAL with Court Appointed Special Advocates of Franklin County (CASA) each year.

## CORPORATE OPPORTUNITIES

Friends of CASA of Franklin County, Ohio is grateful to our corporate partners for their support of CASA GAL volunteers and the children they serve. Here are some ways your business can make a difference in the life of an abused and neglected child in Franklin County.

- Provide opportunities at company events for CASA volunteers and staff to share their stories.
- Invite Friends to participate in an employee volunteer fair.
- Create a workplace giving program through which employees can donate to Friends – and then match employee gifts.
- Provide funding to help cover the cost of a specialized volunteer training program or volunteer event.

## INDIVIDUAL OPPORTUNITIES

You can support Friends of CASA of Franklin County, Ohio in helping to give a voice to abused and neglected children in our community. As a 501(c)(3) non-profit, donations and gifts to Friends are tax deductible to the extent allowed by law, and are used to benefit programs of CASA of Franklin County. Here are a few ways to help:

- Train to become a CASA volunteer. Learn more at <https://www.friendsofcasafranklincountyohio.com/volunteer>.
- Follow us on Facebook @ FriendsCASAofFranklinCountyOhio and at LinkedIn at <https://www.linkedin.com/in/friends-of-casa-of-franklin-county-ohio-b40208249/>.
- Ask your employer to match your donation to Friends.
- Remember Friends of CASA of Franklin County, Ohio in your estate planning. Learn more about ways to give at <https://www.friendsofcasafranklincountyohio.com/donate>.

## GIVING OPPORTUNITIES:

Here are some ways individuals and corporations can support Friends of CASA of Franklin County, Ohio:

- Volunteer as a CASA Guardian ad Litem and advocate for children in court.
- Corporate, foundation & individual gifts.
- Estate Planning.
- Increase awareness of the need for additional CASA volunteers.

## 2022 BOARD OF DIRECTORS

**Tom Barry**  
President – Nonprofit Consultant

**William Payne**  
Vice President, Professor (retired)

**Elizabeth Paczak**  
Secretary, OTC Industrial Technologies

**Will Downs**  
Treasurer, Nationwide Insurance

**Mallory Ashbrook**  
GBQ Partners

**Elizabeth Bonfield**  
Ohio Living Foundation

**Peter DiPiazza**  
Mount Carmel Medical Group

**Maureen Flahive**  
Attorney

**Amy Harman**  
One Columbus

**Nan Hoff**  
Community Representative / CASA Peer Training Team

**Julie Miles**  
Community Representative

**Barbara Oettgen, MD**  
Center for Family Safety and Healing, Nationwide Children's Hospital

**Guy Reece (retired)**  
Franklin County Court of Common Pleas

**Lauren Sabo**  
Attorney, Sabo Law LLC

**Kendra Singh**  
Cardinal Health

**Nicole Woods**  
Ice Miller Legal Counsel

**Denise Youngstead-Parrish**  
Dublin Food Pantry





**Tammy H. Wharton**  
President and CEO



**GIVING OPPORTUNITIES:**

Here are some ways in which community members can support the Girl Scouts of Ohio's Heartland.

- Corporate giving
- Individual giving
- Volunteering
- Estate donations
- Sponsorship opportunities
- Donate to our Dream Big Initiative

**2022 BOARD OF DIRECTORS**

**Tammy Wharton**, President and CEO  
Girl Scouts of Ohio's Heartland

**Amy Franko**, Board Chair  
Amy Franko Associates

**Shakila Ali**, First Vice Chair  
Glen & Shakila Ahrens Family Foundation

**Cathy Lanning**, Second Vice Chair  
Salesforce

**Sarah H. Martin**, Treasurer  
Abercrombie & Fitch

**Marshall Arnold**, Member-at-Large  
JPMorgan Chase Bank

**Bhakti Bania**, Member-at-Large  
BBCO Design LLC

**Melanie Berman**, Member-at-Large  
NiSource

**Darren Cherry**, Member-at-Large  
FocusCFO

**Molly Crabtree**, Secretary, Porter  
Wright

**Lisa Groff**, Member-at-Large, AEP

**Stella Keane**, Member-at-Large  
Express

**Melanie Kolp**, Member-at-Large  
Nationwide

**Susan Krantz**, Member-at-Large  
Kokosing Materials, Inc.

**Su Lok**, Member at Large  
Three Rivers East, LLC

**Natalie Mitchell**, Member-at-Large  
Cardinal Health

**Jim Monkmeyer**, Member-at-Large  
DHL Supply Chain

**Jamison Pack**, Member-at-Large  
Bath & Body Works

**Jennifer Reimer**, Member-at-Large  
OhioHealth

**Elizabeth Seely**, Member-at-Large  
OSU Wexner Medical Center

**Leslie Vasha**, Member-at-Large  
Battelle

**Elyse**, Girl Member

**Syna**, Girl Member

# Girl Scouts of Ohio's Heartland

1700 Watermark Drive | Columbus, Ohio 43215 | 614-487-8101 | [www.gsoh.org](http://www.gsoh.org)



## Mission Statement:

Girl Scouting builds girls of courage, confidence and character who make the world a better place. When you support Girl Scouts of Ohio's Heartland, you are building the next generation of girl leaders right here in our community.

## ABOUT THE ORGANIZATION

Since 1912, Girl Scouts has played a major role in the lives of millions of girls worldwide by giving them a safe space to learn, lead and thrive. Girl Scouts of Ohio's Heartland serves 30 counties, 153 school districts and more than 14,500 girls annually with the help of more than 4,000 volunteers. We stand for empowering ALL girls — in every community across our nation, from every background and every ability — to create the change they want to see in the world. Through our programs, girls get to lead the way, team up with other girls and choose hands-on activities that interest them most. Along the way, they gain important knowledge in STEM, the outdoors, life skills and entrepreneurship; the pillars of the Girl Scout Leadership Experience. Girl Scouts of the USA committed to being part of the STEM and pay gap solution with the goal of placing 2.5 million more girls in the STEM pipeline by 2025. We are supporting this goal with our Dream Big initiative. Through this initiative we will reimagine the 220-acre Camp Ken-Jockey and create a STEM immersive campus. Programs will provide girls with the tools necessary to create pathways to in-demand careers and bridge the gender gap in the STEM field.

## INDIVIDUAL AND CORPORATE OPPORTUNITIES

### At Girl Scouts, we believe that when girls succeed, so does society.

We provide girls with a place to discover their passions and find their voice while positively impacting their communities. You can invest in girls in many different forms, from individual giving opportunities to corporate team volunteering. When you support Girl Scouts of Ohio's Heartland, you are building the next generation of girl leaders right here in our community.

### Ways to support Girl Scouts:

- Volunteer opportunities that fit your schedule.
- Attend or sponsor a Girl Scout event.
- Donate online at [gsoh.org/donate](http://gsoh.org/donate).
- Participate in corporate grant opportunities for programming in STEM, outdoor education, life skills, financial literacy and entrepreneurship.
- Make a planned gift.
- Donate to our Dream Big initiative by searching "Dream Big" on our website or going directly to: [gsoh.org/dreambig](http://gsoh.org/dreambig).



# Goodwill Columbus

1331 Edgehill Road | Columbus, OH 43212 | (614) 294-5181  
TTY: (614) 583-0293 | [www.goodwillcolumbus.org](http://www.goodwillcolumbus.org)



**Ryan Burgess**  
President and CEO

### GIVING OPPORTUNITIES:

Here are some ways in which community members can support Goodwill Columbus.

- Individual Giving
- Corporate Giving
- Planned Giving
- Donating Clothing and Goods
- Donating Furniture
- Donating Automobiles and Fleet Vehicles
- Program Grants
- Volunteering

### 2022 BOARD OF DIRECTORS

- Chair**  
**Marc Reitter**, President & Chief Operating Officer, AEP Ohio
- First Vice Chair & Treasurer**  
**Jennifer Yaross**, Vice President, Investments/Controller, Nationwide Insurance
- Secretary**  
**William Barath**, Partner, Ice Miller, LLP
- Linda Brown**, SVP, Corporate Internal Communications, Huntington National Bank
- Andrea Darby**, VP, IT Integration – Applications, OhioHealth
- Kirk Dickerson**, Chief Strategist – Healthcare, Columbus State Community College
- Jeff Girard**, SVP of Distribution & Logistics, Designer Brands, Inc.
- John Hall**, Sr. Vice President, CBRE
- Stephen Ifeduba**, VP, Corporate & Litigation Counsel, Washington Prime Group
- Megan Kilgore**, Columbus City Auditor, City of Columbus
- Clara Kridler**, Chief People Officer, Hologram
- Melissa Laber**, SVP, GM OptiFreight® Logistics, Cardinal Health
- George Leugers**, Market Executive / Senior Vice President, Fifth Third Bank
- Jen Martin**, Chief Marketing Officer, Olive
- Erik McDowell**, Vice President & National Auto Claims Leader, Westfield Insurance
- Kari Palmer**, Audit Partner, KPMG, LLP
- Linda Roubinek**, EVP, Chief Strategy & Transformation Officer, Grange Insurance



### Mission Statement:

Transforming the lives of individuals through pathways to independence and the power of work.

### Vision Statement:

All individuals are embraced as valued and dignified members of our community.

## ABOUT THE ORGANIZATION



Goodwill Columbus is proud to be one of the region's largest nonprofits, a top 100 employer, and a trusted source in Central Ohio for putting people to work. Throughout our diverse portfolio, we are passionate about creating access to first jobs and advancing all Central Ohioans to their "next best job"

We are committed to equipping 100,000 individuals with the tools to advance economic mobility through the power of work by 2030. To do this, Goodwill Columbus will continue to create new jobs, transform communities through job training, career coaching, and vocational habilitation in order to empower individuals.

## INDIVIDUAL OPPORTUNITIES



As an individual, a few ways to support Goodwill's mission are:

- Donate your gently used clothing, household goods, and furniture at our many locations across Franklin County
- Make a financial gift
- Shop our thrift stores
- Purchase original artwork from the Goodwill Art Studio & Gallery
- Volunteer

## CORPORATE OPPORTUNITIES

As a corporation, a few ways to contribute to Goodwill's mission are:

- Provide grants that support developing a strong workforce, advocating for individuals with developmental disabilities, advancing the arts, and promoting sustainability
- Contract with our custodial and security services
- Host a company donated goods drive
- Partner with our job training programs
- Hire participants of Goodwill's job training and day service programs





**Leah F. Evans**  
President & CEO

### GIVING OPPORTUNITIES:

Here are some ways in which community members can support Homeport Ohio.

- Volunteering
- Corporate Contributions
- Event Sponsorship
- In-kind Donations
- Individual Giving
- Planned Giving

### 2022-2023 BOARD OF DIRECTORS

<b>Sam Adams</b> KeyBanc Capital Markets	<b>Cindy Millison</b> PNC
<b>Anthony Anzic</b> JPMorgan Chase & Co.	<b>Larry Price</b> L. Price & Associates
<b>Tasha Booker</b> City Year Inc.	<b>Michael Purcell</b> (Treasurer) GBQ Partners
<b>Stephen R. Buchenroth</b> Community Volunteer	<b>Denise Robinson</b> Alvis
<b>Dawn Carpenter</b> Fifth Third Bank	<b>Jose Rodriguez</b> Lighthouse Behavioral Health Solutions
<b>Robert "Bo" Chilton</b> IMPACT Community Action	<b>John Rothschild</b> Newmark Knight Frank
<b>Scott Failor</b> Nationwide	<b>Brent Swander</b> Columbus Realtors
<b>Linda Flickinger</b> Supreme Court of Ohio	<b>Jill Tangeman</b> Vorys, Sater, Seymour and Pease LLP
<b>John Geha</b> (Secretary) Community Volunteer	<b>Kristopher "Kip" Wahlers</b> Ice Miller
<b>Chris L. Hune</b> (Past Chair) Team Fishel	<b>Jim Weiler</b> The Robert Weiler Company
<b>Robyn Judge</b> (Vice Chair) Fifth Third Community Development Corp	<i>Non-Voting Members:</i> <b>Sara Neikirk</b> Community Volunteer (Director Emeritus)
<b>Matthew Keating</b> Huntington	<b>Derek Bergman</b> OSU Fisher School Fellow
<b>Michael Kelley</b> Kelley Companies	<b>Danielle Kaminski</b> Moritz School Fellow
<b>Emmett M. Kelly</b> (Chair) Frost Brown Todd, LLC	

### Learn More

Are you interested in learning more about Homeport? We offer guided 90-minute bus tours so you can experience how and why safe, sustainable, and affordable housing matters for a better Central Ohio. Contact Laverne D. Price, Senior Director of Resource Development, at 614.545.4891 or [laverne.price@homeportohio.org](mailto:laverne.price@homeportohio.org) to schedule.

# Homeport

3443 Agler Road | Columbus, Ohio 43219 | 614-221-8889  
[www.homeportohio.org](http://www.homeportohio.org) | Facebook: /HomeportOH | Twitter: @HomeportOH



### Who we are:

Homeport is the largest, locally-focused nonprofit developer of affordable housing in Central Ohio. Having served the area since 1987, Homeport owns 2,747 affordable rental apartments and homes in 43 communities. Its 6,541 residents, families and seniors, can access a broad range of services ranging from after school programming to emergency assistance for rent and utilities. Homeport partnerships also link its residents to food, furniture and employment assistance as well as medical and mental health services. Homeport is a leading provider of homebuyer education and budget and credit counseling for Central Ohio.

### COMMUNITY IMPACT

Real estate development and resident services are simply the tools we use to provide our clients with the dignity, security and opportunity they deserve. The team at Homeport is truly in the "people business." The true beneficiaries of our work are the 6,541 individuals we have the honor of serving every day.



## homeport

### What we do:

Providing a roof over someone's head is only the start of a stronger home. Homeport surrounds its rental communities with comprehensive support to promote long-term stability and health. With the assistance of partners and volunteers, Homeport organizes out-of-school programs, free produce markets, school supply drives, and more for thousands of residents every year.

### Why we are important:

Homeport addresses the growing demand of affordable housing in Central Ohio. And the challenge is huge:

- Fifty-four thousand Central Ohio households are paying more than half their incomes for housing.
- The poverty population has grown at more than three times the rate of the overall population (2009-2014) and extends into Columbus suburbs.
- There is only one affordable rental unit for every three renters in poverty.
- Of the top 10 occupations with the most annual openings, nine do not pay workers enough to afford housing. The one exception is Registered Nurses.
- More than 17,000 Central Ohioans are on the application list for a rental subsidy.

### HOW YOU CAN HELP

### Homeport is the answer.

An investment in Homeport is an investment in the lives of Central Ohioans and beyond. A decent home is at the center of every important issue, and it has a multiplier effect. Support of affordable housing creates results that extend far beyond and changes the lives of generations.

Our resident services enhance the chances of family, financial and community stability. This leads to jobs, better health and improved economic conditions, as well as financial education. It is what separates Homeport from other home providers. Homeport works with individuals, families and seniors making 60 percent or less of the area median income, which is \$55,212 for a family of four.



# LifeCare Alliance

LifeCare Alliance | 1699 West Mound Street | Columbus, Ohio 43223



**Charles Gehring**  
President and CEO

**GIVING OPPORTUNITIES:**

Here are some ways in which community members can support LifeCare Alliance.

- Planned Giving
- Annual Giving
- One-time Gifts
- Volunteering

**2022-2023 BOARD OFFICERS**

**Erin A. Kelley Shannon**  
Board Chair

**Dino D. Lanno**  
Vice Chair

**Patricia M. Ammendola**  
Secretary

**T. Earl LeVere, JD**  
Treasurer

**Thomas P. Skoog**  
Asst. Treasurer

**Rev. Msgr. Joseph M. Hendricks**  
Immediate Past Chair

**2022-2023 BOARD MEMBERS**

- Philip B. Bartlett
- Todd Beekman
- Michael Berichon
- The Honorable Kimberly J. Brown
- Hugh C. Cathey
- Rob Cercek
- Karen Cookston, CRPC
- Timothy J. Cotter, MLHR, SPHR, SHRM-SCP, MPM
- Todd Davis
- Mindy L. Drummond
- Jeffrey C. Fivecoat
- Elizabeth A. Haselwood, MSN, RN
- Diane Herman
- Kent C. Hess
- Marie M. Mead
- Jay R. Meglich, CPA
- Steven Miller
- William E. Mojica
- Paul A. Naumoff, JD
- Steve A. Niswonger
- Suzanne Q. Perry
- Tim Riordan
- Denise M. Robinson
- Donna M. Ruscitti, Esq.
- Michael R. Sayre
- Shannon Skaggs
- David C. Tiggert
- Bobbie Jo Trittschuh
- Thomas H. Welch
- Timothy O. Wiechers, JD
- Randolph C. Wiseman, JD

**Nutrition Services**

- Groceries-to-Go
- Meals-on-Wheels
- Project OpenHand-Columbus
- Senior Dining Centers
- Senior Farmers Market

**Health Services**

- Arthritis Support Services
- Central Ohio Diabetes Association
- Columbus Cancer Clinic
- Community Wellness Centers
- Diabetes Dayton

**Support Services**

- Beat the Heat Fan Campaign
- CHORES Home Repair
- Help-at-Home
- IMPACT Safety
- Senior PetCare

**About**

Approaching 125 years of service – and 50 years of providing Meals-on-Wheels in central Ohio – LifeCare Alliance is recognized as a national model for its programming, volunteer engagement, effective mergers, and social entrepreneurship.

**Purpose**

Keeping seniors and individuals living with medical challenges or disabilities safe, independent, and living in their own homes—right where they want to be!

**Now Offering Arthritis Support Services**

In 2022, responding to a gap in the community for basic needs and services to support those living with arthritis, LifeCare Alliance introduced Arthritis Support Services to our menu of offerings provided through our Wellness Department. Services range from home assessments by our embedded occupational therapist, to home modifications completed through our CHORES home repair program, to provision of durable medical equipment and assistive devices for those living with this debilitating disease. Once again, as it has throughout its entire history, LifeCare Alliance has expanded to identify and meet the changing needs of the central Ohio community.

**Social Enterprise**

LifeCare Alliance's social enterprise efforts bridge critical funding gaps and allow us to serve seniors and those facing medical challenges—without waiting lists and regardless of ability to pay. Social enterprise accounts for roughly 25 percent of our annual operating revenue. When you choose one of our social enterprises you help ensure that public and private funding is leveraged to its fullest extent.

- L.A. Catering
- Corporate Wellness Programs
- Immunizations & Travel Vaccines
- IMPACT Safety
- Human Resources Background Checks
- Meals-for-Kids

**CORPORATE OPPORTUNITIES**

- **Big Wheels Sponsorship:** Become a sponsor of LifeCare Alliance's signature gala and enjoy a night of festivities, gourmet food, and silent and live auctions in support of the annual operating fund for all programs.
- **Night of Hope & Support Sponsorship:** Shine bright as a sponsor of this annual survivor fashion show that supports the work of our Columbus Cancer Clinic. Join WBNS-10TV's Angela An in celebrating the strength, moxie, and style of these cancer survivors and heroes.
- **The Dash For Camp Sponsorship:** Sponsors of this annual 5k walk/run help children and teens with diabetes enjoy a summer camp setting where they make friends and enjoy outdoor experiences all while learning to manage their disease.

- **Adopt-a-Route:** Adopt a regularly scheduled Meals-on-Wheels delivery route and build employee morale and teamwork—while giving back. Over lunch hour, associates can deliver to seniors in an area that's close to their workplace. Clients get a nutritious meal and a friendly visit; associates get the satisfaction of serving their community; and you get the reward of being a responsible corporate citizen. Win-win-win!
- **In-Kind Donations:** Donate food products, medical supplies and equipment, personal hygiene articles, cleaning supplies, pet food, or other items to help support various programs. This provides an environmentally sound solution for your business while helping meet the basic needs of your neighbors.

[lifecarealliance.org/donate](https://lifecarealliance.org/donate)  
[lifecarealliance.org/volunteer](https://lifecarealliance.org/volunteer)  
[lifecarealliance.org/referral](https://lifecarealliance.org/referral)



# THE LIST

Compiled by Robin Smith  
614-220-5444  
rlsmith@bizjournals.com

## NONPROFIT ORGANIZATIONS

FIRST PUBLISHED OCTOBER 7, 2022

RANKED BY 2021 CENTRAL OHIO REVENUE

	Organization name/prior rank <sup>1</sup> Website	Address Phone	2021 local revenue <sup>2</sup>	2021 local expenses	Programs and services <sup>3</sup>	Top local executive
1	<b>National Church Residences</b> ① nationalchurchresidences.org	2335 North Bank Dr. Columbus, OH 43220 614-451-2151	\$391 million	\$313.6 million	Care, services and residential communities for seniors	Mark Ricketts
2	<b>Ohio Living</b> ② ohioliving.org	9200 Worthington Rd. #300 Westerville, OH 43082 614-888-7800	\$217.92 million	\$223.42 million	Continuing care retirement communities; home health; hospice; palliative medicine	Laurence Gumina
3	<b>Mid-Ohio Food Collective</b> ③ mofc.org	3960 Brookham Dr. Grove City, OH 43123 614-277-3663	\$150.72 million	\$123.73 million	Foodbank; Kitchen; Pharmacy; Farm	Matthew Habash, mhabash@midohiofoodbank.org
4	<b>Equitas Health</b> ④ equitashealth.com	1105 Schrock Rd. #400 Columbus, OH 43229 614-299-2437	\$84.89 million	\$70.66 million	HIV Testing and treatment; primary care; gender affirming care: mental health and recovery services	Robert Copeland, robertcopeland@equitashealth.com
5	<b>IMPACT Community Action</b> ⑦ impactca.org	711 Southwood Ave. Columbus, OH 43207 614-458-1624	\$57.94 million	\$57.2 million	Emergency rental and utility services; workforce development programs; financial literacy classes; re-entry programming	Robert Chilton, bchilton@impactca.org
6	<b>Goodwill Columbus</b> ⑥ goodwillcolumbus.org	1331 Edgehill Rd. Columbus, OH 43212 614-294-5181	\$54.12 million	\$53.11 million	Donated goods retail, custodial and security services, adult day and residential services and workforce programs.	Ryan Burgess, ryan.burgess@gwcols.com
7	<b>The Buckeye Ranch</b> ⑦ buckeyeranch.org	4653 E. Main St. Whitehall, OH 43213 614-875-2371	\$52.74 million	\$51.93 million	Mental and behavioral health services; child welfare and foster care; young adult independent living	Vickie Thompson-Sandy, vtsandy@buckeyeranch.org
8	<b>Southeast Healthcare</b> ⑤ southeasthc.org	16 W. Long St. Columbus, OH 43215 614-225-0980	\$50.51 million	\$49.31 million	Primary care, behavioral health, vocational, dental, homeless and pharmacy services	Bill Lee
9	<b>PrimaryOne Health</b> ⑧ primaryonehealth.org	2780 Airport Dr. #100 Columbus, OH 43219 614-859-1900	\$44.08 million	\$41.87 million	Primary care; dental care; vision care; behavioral health care	Charleta Tavares, ctavares@primaryonehealth.org
10	<b>Community Shelter Board</b> ⑪ csb.org	355 E. Campus View Blvd. #250 Columbus, OH 43235 614-221-9195	\$43.57 million	\$42.45 million	Homelessness prevention, emergency shelter, rapid re-housing, permanent supportive housing	Michelle Heritage, mheritage@csb.org
11	<b>Alvis Inc.</b> ⑫ alvis180.org	2100 Stella Ct. Columbus, OH 43215 614-252-8402	\$39.23 million	\$32.68 million	Residential reentry; behavioral healthcare; workforce development; care, support for adults with developmental disabilities	Denise Robinson
12	<b>Lutheran Social Services</b> ⑨ lssnetworkofhope.org	500 W. Wilson Bridge Rd. #245 Worthington, OH 43085 614-228-5200	\$37.56 million	\$36.8 million	LSS Faith Mission, LSS CHOICES, LSS food pantries, LSS affordable housing	Larry Crowell
13	<b>Maryhaven</b> ⑩ maryhaven.com	1791 Alum Creek Dr. Columbus, OH 43207 614-445-8131	\$36 million	\$32.75 million	Residential intake; intensive outpatient therapy; gambling intervention	Oyama Garrison, ogarrison@maryhaven.com
14	<b>LifeCare Alliance</b> ⑬ lifecarealliance.org	1699 W. Mound St. Columbus, OH 43223 614-278-3130	\$27.85 million	\$24.28 million	Home delivered meals; cancer screenings, support services; diabetes management, education; Help-At-Home personal care	Charles Gehring, cgehring@lifecarealliance.org
15	<b>Heinzerling Community</b> ⑮ heinzerling.org	1800 Heinzerling Dr. Columbus, OH 43223 614-272-8888	\$26.33 million	\$24.46 million	Residential and medical services to children and adults with severe and profound physical, intellectual, and developmental disabilities	Robert Heinzerling, rheinzer@heinzerling.org
16	<b>United Way of Central Ohio</b> ⑭ liveunitedcentralohio.org	360 S. 3rd St. Columbus, OH 43215 614-227-2700	\$25.45 million	\$25.13 million	Success by Third Grade program; workplace giving options; Volunteer United portal; Tax Time free tax preparation services	Lisa Courtice, lisa.courtice@uwcentralohio.org
17	<b>Open Door Columbus</b> ⑯ opendoorcolumbus.org	540 Industrial Mile Rd. Columbus, OH 43228 614-641-2900	\$25.35 million	\$25.53 million	Residential support services; adult day services; creative programs; accessible transportation	Rebecca Sharp, bsharp@opendoorcolumbus.org
18	<b>Homeport</b> ⑳ homeportohio.org	3443 Agler Rd. #200 Columbus, OH 43219 614-221-8889	\$21.14 million	\$16 million	Affordable rental housing for families and seniors; resident services; financial education; affordable for-sale single family homes	Leah Evans, leah.evans@homeportohio.org
19	<b>Netcare Access</b> ⑱ netcareaccess.org	199 S. Central Ave. Columbus, OH 43223 614-274-9500	\$18.28 million	\$18.04 million	Mental health and substance use crisis intervention, stabilization and assessment	Brian Stroh, bstroh@netcareaccess.org
20	<b>Hattie Larlham-Central Ohio</b> ⊛ hattielarlham.org	769 Brooksedge Blvd. Westerville, OH 43081 614-486-4361	\$18.19 million	\$16.49 million	Disability services for children and adults: residential, medical, recreational, educational, work training and employment services	Stephen Colecchi
21	<b>American Red Cross of Greater Columbus</b> ⊛ redcross.org/columbus	995 E. Broad St. Columbus, OH 43205 614-253-2740	\$18.18 million	\$6.98 million	Disaster relief services	Stephanie Byrd, stephanie.byrd@redcross.org
22	<b>Lower Lights Christian Health Center</b> ⊛ llhc.org	1160 W. Broad St. Columbus, OH 43204 614-274-1455	\$18 million	\$17.5 million	Primary care; behavioral health; vision; dental	Tracy Cloud, tracy.cloud@llhc.org
23	<b>North Central Mental Health Services Inc.</b> ㉑ ncmhs.org	1301 N. High St. Columbus, OH 43201 614-299-6600	\$16.66 million	\$15.41 million	Psychiatry; psychiatric nursing; counseling; case management and residential services	Donald Wood, donaldrwood@sprynet.com
24	<b>St. Vincent Family Services</b> <sup>4</sup> ⊛ svfsohio.org	1490 E. Main St. Columbus, OH 43205 614-252-0731	\$14.97 million	\$12.74 million	Day treatment; youth residential treatment; counseling and therapy; foster care	Susan Lewis Kaylor, skaylor@svfc.org
25	<b>The Salvation Army in Central Ohio</b> <sup>5</sup> ㉒ salvationarmycentralohio.org	966 E. Main St. Columbus, OH 43205 614-221-6561	\$12.96 million	\$11.43 million	Material assistance; housing assistance; children's programs; anti-human trafficking Services	James Brennan

<sup>1</sup> \*-Not ranked last year (applies to print List only).

<sup>2</sup> Fiscal year-ends range from June 30, 2021 to June 30, 2022. Where organization is affiliated with a national organization, financials are for Central Ohio unit only.

<sup>3</sup> May be edited for space considerations.

<sup>4</sup> Formerly listed as St. Vincent Family Center.

<sup>5</sup> Covers Delaware and Franklin counties.

### ▶ CLOSER LOOK

## \$1.67B

Total 2021 revenue, all listed organizations.

## \$1.49B

Total 2021 expenditures, all listed organizations.

### TOP ORGANIZATIONS BY CENTRAL OHIO EMPLOYEES

Ohio Living	2,500
Goodwill Columbus	1,082
National Church Residences	961
Southeast Healthcare	470
Open Door Coumbus	415
Alvis	407
Maryhaven	400
PrimaryOne Health	322
Heinzerling Community	320
Lutheran Social Services	314

### ABOUT THE LIST

Information on The List was supplied by individual organizations through questionnaires and could not be independently verified by Columbus Business First. Volunteers of America Ohio & Indiana, ranked No. 19 last year; Center for Family Safety & Healing, No. 27; Big Brothers Big Sisters of Central Ohio, No. 33; Godman Guild Association, No. 40; House of Hope for Alcoholics Inc., No. 42; Boy Scouts of America-Simon Kenton Council, No. 43; Childhood League Center, No. 46; and Community Refugee & Immigration Services, No. 48, did not respond to our inquiries by deadline. Only those that responded to our inquiries were listed.

Revenues and expenditures of more than \$1 million are automatically rounded; however, rankings are based on unrounded numbers. In case of ties, organizations are listed alphabetically.

### SUBSCRIBERS CAN SEE MORE IN THE ONLINE LIST

Subscribers can find additional organizations online. Sign in at ColumbusBusinessFirst.com, choose Lists & Leads in the menu at the top of the page.



**T H E L I S T**

Compiled by Robin Smith  
614-220-5444  
rlsmith@bizjournals.com

# NONPROFIT ORGANIZATIONS

FIRST PUBLISHED OCTOBER 7, 2022

RANKED BY 2021 CENTRAL OHIO REVENUE

Organization name/prior rank <sup>1</sup> Website	Address Phone	2021 local revenue <sup>2</sup>	2021 local expenses	Programs and services <sup>3</sup>	Top local executive
<b>26</b> Girl Scouts of Ohio's Heartland Council Inc. <sup>29</sup> gsoh.org	1700 Watermark Dr. Columbus, OH 43215 614-487-8101	\$12.26 million	\$6.29 million	One-of-a-kind hands-on, leadership development programs on STEM, outdoors, entrepreneurship and life skills	Tammy Wharton, twharton@gsoh.org
<b>27</b> Legal Aid Society of Columbus – OSLSA/LASC/OPLC <sup>34</sup> columbuslegalaid.org	1108 City Park Ave. Columbus, OH 43206 614-737-0144	\$11.31 million	\$9.87 million	Free legal assistance to stabilize housing, connect with benefits, increase employability and address debt, and assist seniors and veterans	Kathleen McGarvey
<b>28</b> Directions for Youth & Families <sup>26</sup> dfyf.org	1515 Indianola Ave. Columbus, OH 43201 614-294-2661	\$11.26 million	\$7.47 million	Clinical counseling; after-school/summer programs; kindergarten readiness; parenting classes	Duane Casares, dcasares@dfyf.org
<b>29</b> Jewish Community Center of Greater Columbus <sup>24</sup> columbusjcc.org	1125 College Ave. Columbus, OH 43209 614-231-2731	\$10.99 million	\$9.66 million	Early childhood infant to pre-K; fitness, aquatics and recreation; summer camp; youth programs	Michael Klapper
<b>30</b> Economic and Community Development Institute <sup>23</sup> ecdi.org	1655 Old Leonard Ave. Columbus, OH 43219 614-732-0897	\$10.56 million	\$7.49 million	Small business lending, assistance, training; resources for women, minority business owners; food business incubation	Inna Kinney, ikinney@ecdi.org
<b>31</b> YWCA Columbus <sup>25</sup> ywcacolumbus.org	65 S. 4th St. Columbus, OH 43215 614-224-9121	\$9.66 million	\$8.83 million	Housing services for homeless families and single women; childcare, youth development; social justice, racial equity advocacy	Christie Angel
<b>32</b> Habitat for Humanity-MidOhio <sup>28</sup> habitatmidohio.org	6665 Busch Blvd. Columbus, OH 43229 614-422-4828	\$8.68 million	\$7.96 million	New home construction for low-income, first time buyers; rehabilitation of vacant homes; home repair services	E.J. Thomas, ejthomas@habitatmidohio.org
<b>33</b> Home for Families <sup>4</sup> <sup>31</sup> homelessfamiliesfoundation.org	33 N. Grubb St. Columbus, OH 43215 614-461-9247	\$8.15 million	\$7.88 million	Housing support for families, pregnant women, transitional-age youth, CSCC students; family stability, educational programs <sup>5</sup>	Beth Fetzer-Rice, bfetzer@homelessfamiliesfoundation.org
<b>34</b> Jewish Federation of Columbus <sup>34</sup> jewishcolumbus.org	1175 College Ave. Columbus, OH 43209 614-237-7686	\$6.4 million	\$6.3 million	Work to meet all community needs; train future leaders; provide security to schools, synagogues; support Israel & Jews worldwide	Joel Marcovitch, joel@jewishcolumbus.org
<b>35</b> I Know I Can <sup>32</sup> iknowican.org	1108 City Park Ave. #301 Columbus, OH 43206 614-233-9510	\$6.38 million	\$6.12 million	College advising; career advising; FAFSA support; college retention support	Katina Fullen, kfullen@iknowican.org
<b>36</b> Catholic Social Services Inc. <sup>30</sup> colscss.org	197 E. Gay St. 2nd Fl. Columbus, OH 43215 614-221-5891	\$6.34 million	\$6.64 million	Services for immigrant Hispanic community; Stay the Course for low-income CSCC students; senior programs, case management <sup>5</sup>	Rachel Lustig, rlustig@colscss.org
<b>37</b> Action for Children <sup>37</sup> actionforchildren.org	78 Jefferson Ave. Columbus, OH 43215 614-224-0222	\$6.25 million	\$6.05 million	Child-care referrals, resources for parents and families; parenting education; training for early childhood programs, practitioners	Eric Karolak, ekarolak@actionforchildren.org
<b>38</b> Furniture Bank of Central Ohio <sup>35</sup> furniturebankcoh.org	118 S. Yale Ave. Columbus, OH 43222 614-272-9544	\$6.01 million	\$4.71 million	Furniture for individuals and families impacted by poverty; thrift store; disposal and clean-out services	Phil Washburn, pwashburn@furniturebankcoh.org
<b>39</b> Huckleberry House Inc. <sup>39</sup> huckhouse.org	1421 Hamlet St. Columbus, OH 43201 614-294-8097	\$5.78 million	\$4.56 million	Teen crisis shelter; transitional living for 18-24 year-olds; family, youth counseling; youth outreach, coordinate access team for housing	Sonya Thesing, sthesing@huck-house.org
<b>40</b> Community for New Direction <sup>34</sup> cndcolumbus.org	993 E. Main St. Columbus, OH 43205 614-272-1464	\$5.19 million	\$4.95 million	Adult mental health, substance use disorder treatment; prevention education, grades K-12; violence, gang intervention services	John Dawson, jdawson@cndcolumbus.org
<b>41</b> St. Stephen's Community House <sup>36</sup> saintstephensch.org	1500 E. 17th Ave. Columbus, OH 43219 614-294-6347	\$4.54 million	\$4.54 million	Food pantry; emergency services (rent and utility assistance); early learning center; youth/teen programs	Marilyn Mehaffie, mmehaffie@saintstephensch.org
<b>42</b> Columbus Speech & Hearing <sup>34</sup> columbusspeech.org	510 E. North Broadway Columbus, OH 43214 614-263-5151	\$4.49 million	\$4.56 million	Audiology and hearing aid services; speech therapy; American Sign Language instruction	James Dye, jdye@columbusspeech.org
<b>43</b> Jewish Family Services <sup>44</sup> jfccolumbus.org	1070 College Ave. Columbus, OH 43209 614-231-1890	\$4.24 million	\$3.99 million	Career services; senior and holocaust services; counseling; financial assistance/empowerment	Karen Mozenter
<b>44</b> Down Syndrome Association of Central Ohio <sup>52</sup> dsaco.net	510 E. North Broadway #401 Columbus, OH 43214 614-263-6020	\$4.02 million	\$4.18 million	Learning Aid Ohio; 5-week Summer Learning Academy; rights and accessibility advocacy for children and adults; outreach	Kari Jones, kjones@dsaco.net
<b>45</b> Recreation Unlimited <sup>45</sup> recreationunlimited.org	7700 Piper Rd. Ashley, OH 43003 740-548-7006	\$3.98 million	\$2.74 million	Year-round respite weekend camps; summer residential camps; summer day camps; outside not-for-profit user group camps	Paul Huttlin
<b>46</b> Flying Horse Farms <sup>34</sup> flyinghorsefarms.org	5260 Rt. 95 Mount Gilead, OH 43338 419-751-7077	\$3.77 million	\$3.38 million	Provides opportunities for children with serious illnesses to heal, grow, and thrive	Nichole Dunn, nichole@flyinghorsefarms.org
<b>47</b> Columbus Literacy Council <sup>47</sup> clcworks.org	5825 Chantry Dr. Columbus, OH 43232 614-282-7661	\$3.75 million	\$3.75 million	Case management services; adult education; summer camp and after-school programming; housing stability	Joy Reyes, jreyes@columbusliteracy.org
<b>48</b> Youth Advocate Services <sup>41</sup> yasohio.org	2323 W. 5th Ave. #150 Columbus, OH 43204 614-258-9927	\$3.37 million	\$3.34 million	Behavioral health; foster care including adoption support; Ohio early intervention	Sarah Steuer, ssteuer@yasohio.org
<b>49</b> Columbus Early Learning Centers <sup>38</sup> columbasearlylearning.org	1611 Old Leonard Ave. Columbus, OH 43219 614-253-5525	\$3.19 million	\$2.79 million	Early learning child care for ages 6 weeks to 5 years of age; early literacy home visiting program for children 12-36 months of age	Gina Ginn
<b>50</b> Charitable Pharmacy of Central Ohio <sup>34</sup> charitablepharmacy.org	200 E. Livingston Ave. Columbus, OH 43215 614-227-0301	\$3.08 million	\$7.44 million	Prescription medications; pharmacist counseling and health education; fresh fruits and vegetables; social service referrals	R. Taylor Reed, taylor.charitablepharmacy@gmail.com

<sup>1</sup> \*-Not ranked last year (applies to print List only).

<sup>2</sup> Fiscal year-ends range from June 30, 2021 to June 30, 2022. Where organization is affiliated with a national organization, financials are for Central Ohio unit only.

<sup>3</sup> May be edited for space considerations.

<sup>4</sup> Formerly Homeless Families Foundation.

<sup>5</sup> CSCC-Columbus State Community College.

**CLOSER LOOK**

**11,186**

Total paid Central Ohio employees, all listed organizations.\*

**40,975**

Total Central Ohio volunteers, all listed organizations.\*\*

**TOP ORGANIZATIONS BY CENTRAL OHIO VOLUNTEERS**

Mid-Ohio Food Collective	10,862
LifeCare Alliance	7,500
The Salvation Army in Central Ohio	6,126
Girl Scouts of Ohio's Heartland Council	4,000
Habitat for Humanity-MidOhio	2,660
Lutheran Social Services	1,720
United Way of Central Ohio	902
Alvis	887
Goodwill Columbus	820
Equitas Health	750

\*Some organizations did not report employee counts.  
\*\*Some organizations do not have volunteers or did not report volunteer counts.

**NEED A COPY OF THE LIST?**

For information on obtaining reprints, web permissions and commemorative plaques, call 877-397-5134. More information can be found online at ColumbusBusinessFirst.com by clicking the "Store" tab near the bottom of the site.

**WANT TO BE ON THE LIST?**

If you wish to be surveyed when The List is next updated, or if you wish to be considered for other Lists, email your contact information to Robin Smith at rlsmith@bizjournals.com.





**Oyauma Garrison**  
CEO and President



EXECUTIVE LEADERSHIP TEAM

- Malik Malone**  
VP of Business Development
- Angela Stewart**  
VP of Human Resources
- Adam Rowan**  
Chief Operating Officer
- John Reed**  
Chief Financial Officer
- Melissa Mitchell**  
General Counsel
- Matt Donovan**  
VP of Operations
- Dr. Trupti Patel**  
Chief Medical Officer

2022 BOARD OF DIRECTORS

OFFICERS

- Oyauma Garrison**,  
Maryhaven, CEO
- Board Chair **Amy Heaton**  
Huntington Bank, Corporate Human Resources Director
- Vice Chair **Noreen Nichols**  
Konecranes, VP of Human Resources
- Treasurer **Abby Morrison**  
Bank of America, VP Senior Relationship Manager, Business Banking
- Secretary **Shellee Simmons-Taylor**  
Worthington Industries, VP Corporate Strategy & Innovation

MEMBERS

- Kevin Brady**,  
Retired
- Judge **Lisa Sadler**,  
Ohio Tenth District Court of Appeals
- Judge **David Cain**,  
Retired
- Judge **Dan Hawkins**,  
Franklin County Common Pleas Court
- Rich Mueller**,  
Retired
- Patricia Eshman**,  
Retired
- Judge **Guy Reece**
- Tina Ambrozy**, Nationwide - SVP, Strategic Customer Solutions
- Michael Stovall**, Community Volunteer
- Ashley Matthews**, Crane Group, Director of Tax
- Sheela Kunduru**, Sritech Global, CEO
- John Littlejohn**, Hewlett Packard Enterprise- Enterprise Account Manager
- Charles Schneider**, Isaac Wiles, Of Counsel
- Lana Ruebel**, Retired

# Maryhaven

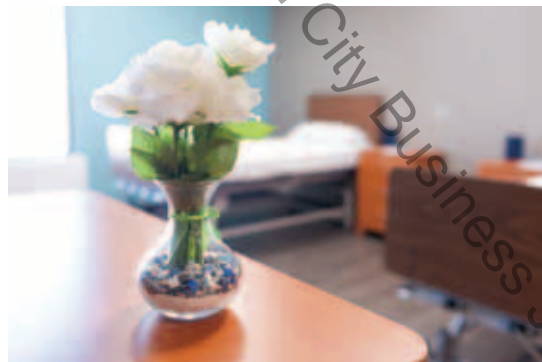
1791 Alum Creek Drive | Columbus, OH 43207 | (614) 445-8131  
www.maryhaven.com



Maryhaven staff offer the most compassionate and dedicated care in our six facilities across central Ohio.



Maryhaven employees and clients work together to restore hope and change lives.



Maryhaven provides calming, clean, and restful facilities to best provide a positive atmosphere as our clients work to change their lives.



Maryhaven believes recovery is physical, mental, and emotional. Our facilities include many recreational and outdoor spaces.



Restoring hope and changing lives is the goal Maryhaven strives to accomplish.

## Mission Statement:

Maryhaven helps individuals and families lead healthy lives free from addiction and mental illness by providing education, treatment, and support. We aim to be a "haven" where everyone receives hope to heal.

## CORPORATE OPPORTUNITIES



Corporations can participate at many different levels. Here are a few of the ways, both volunteer and contribution.

- Naming opportunities of facility rooms, offices, communal spaces
- Furnishing rooms, communal spaces
- The Residence long-term residential facility multiple opportunities
- Annual Restoring Lives Breakfast
  - Event sponsorship levels
  - Table/ticket purchases
  - In-kind donations of event materials
- Volunteering
  - Events
  - Facilities
  - Groups

## INDIVIDUAL OPPORTUNITIES



Individuals can participate at many different levels. Here are a few of the ways, both volunteer and contribution.

- Purchasing tickets to events such as the annual Restoring Lives Breakfast
- Personal donations to the [Maryhaven.com/Give](http://Maryhaven.com/Give) online donation form
- Volunteering at events, our facilities, client groups and activities.



# Mid-Ohio Food Collective

3960 Brookham Drive | Grove City, Ohio 43123 | (614) 277-FOOD (3663)  
info@mofc.org | www.mofc.org



Facebook: @mofcollective | Instagram: @midohiofoodcollective | LinkedIn: www.linkedin.com/company/mofcollective | Twitter: @mofcollective

## Mission Statement:

**To end hunger one nourishing meal at a time while co-creating communities where everyone thrives.**

Mid-Ohio Food Collective acquires & distributes a significant amount of nutritious food to our hungry neighbors. We're a hub for caring people who want to give back with their time, talent, testimony & treasure. We're a welcome place to imagine, re-imagine, and to test out fresh new ideas to tackle tough issues impacting our neighbors. We work hard to create & apply technologies, using data to innovate & inform our work.

We are the largest hunger-relief organization in central and eastern Ohio. We partner with an amazing agency network of some 700 local charities across 20 counties to nourish our communities.

## THE NEED

One in five Ohioans are food insecure. For children, that number is one in four. Our vision – Hunger-free and healthier communities.

Hunger costs us all. It afflicts our healthcare system, erodes our public education system, depreciates productive workforces, and forces tradeoffs between spending decisions that can destabilize homes. Mid-Ohio Foodbank has the advanced logistics & warehouse to distribute tens of millions of pounds of food – nearly 65% fresh – to our communities.

## INDIVIDUAL OPPORTUNITIES

- Individual donations, \$1 can provide up to \$5.22 in groceries.
- Pledge Partners- automate your giving by making regular monthly donations to MOFC
- Give appreciated assets (stock, mutual fund gifts, insurance gifts, gifts from your retirement fund).
- Nourishing Neighbors Legacy Society, an initiative for friends who have chosen to support Mid-Ohio Food Collective's mission through a planned gift commitment.
- 1980 Society, an annual giving commitment of \$1,980 or more in honor of the year MOFC was founded.
- Shop with Amazon Smile, search for Mid-Ohio Foodbank.
- Tribute gifts (honorarium and memoriam gifts).
- Kroger Community Rewards, link your Kroger card and a portion of your purchase will provide food for hungry neighbors.
- Host a fundraising event.
- Volunteer (food sorting and packing, on-site community pantry, Mid-Ohio Market, Mid-Ohio Farm and gardens, Kid's Café meal prep, Mid-Ohio Kitchen at Roots)

[www.mofc.org/donate](http://www.mofc.org/donate)  
[www.mofc.org/volunteer](http://www.mofc.org/volunteer)  
[www.mofc.org/advocate](http://www.mofc.org/advocate)



**Matt Habash**  
President & CEO

 **mid-ohio food collective**

foodbank | farm | farmacy | kitchen | market

## GIVING OPPORTUNITIES:

Here are some ways in which community members can support the Mid-Ohio Food Collective.

- Individual Giving
- Corporate Giving
- Volunteer
- Advocate

## 2022 BOARD OF DIRECTORS

**Ariana Ulloa-Olavarrieta**  
Board Chair City of Columbus

## HOW YOU CAN HELP

Our work is fueled by the thousands of individuals, businesses, foundations, and organizations who make gifts each year through traditional philanthropy planned giving, corporate and employee giving. Our ability to feed almost 700,000 people each year relies on this financial support, and we are deeply grateful to our donors.

Our customers rely on us to provide the right food, at the right time, in the right place- and we rely on an entire community of volunteers to meet the need. Delivering customer excellence in fighting hunger requires nearly 1,000 volunteers every single week. We need new individuals and groups to volunteer and for volunteers to keep coming back to help feed their neighbors.

## CORPORATE OPPORTUNITIES

- Operation Feed (March-May)
- Employee giving campaigns:
- Holiday Meals (October-November)
- Double Your Donation Day (December)
- Sponsorships (Mid-Ohio Foodbank, Mid-Ohio Farm, Mid-Ohio Kitchen, Mid-Ohio Market, Fresh Food Distribution, Double Your Donation Day, Co-Branding Campaigns, Fuel our Fleet, Hunger Action Month, Community Meals)
- Engage your customers: host a point-of-sale campaign, promote a specialty item for good, or host a DipJar that allows you to collect funds from your customers
- Register a volunteer group or Team-Building experience





**Deanna Stewart**  
President



**MOUNT CARMEL**  
Foundation

**GIVING OPPORTUNITIES:**

Giving to Mount Carmel is designed to align with individual, corporate and foundation areas of priority focus. To make giving easy, Mount Carmel accepts a variety of gift types including:

- Individual gifts
- Corporate gifts and grants
- Foundation grants
- Estate gifts
- Gifts in honor or memory of someone special

Gifts can be made via check, cash, credit card, stock transfer, pledge agreements, grant agreements and/or estate bequests or acknowledgments. Since no gift fees are assessed, 100% of all gifts are invested in the program selected by the donor.

**2022 BOARD OF DIRECTORS**

- |  |   |
|--|---|
| <p><b>Ramon Jones</b><br/>Board Chair<br/>Executive VP &amp; Chief Marketing Officer<br/>Nationwide</p> <p><b>Katie Ballay</b><br/>Head of Integrated Marketing Communications,<br/>Ford Pro</p> <p><b>Alyncia Bowen, Ph.D.</b><br/>Dean, Ross College of Business, Franklin University</p> <p><b>Amy Cain</b>, Assistant VP<br/>Operational Excellence,<br/>Grange Insurance</p> <p><b>Courtnee Carrigan</b>, CEO &amp; Senior Consultant,<br/>Raising the Bar Performance Group</p> <p><b>Lilly Cavanaugh</b><br/>Executive Director<br/>Ohio Latino Affairs Commission</p> <p><b>Mike Curtin</b><br/>Community Advocate</p> <p><b>Jennifer Dodovski</b><br/>Senior Vice President<br/>Commercial Operations<br/>Bread Financial</p> <p><b>David Frea</b>, President<br/>Infonetics, Inc.</p> <p><b>Kathryn Gardner, M.D.</b><br/>Physician<br/>Radiology, Inc.</p> <p><b>Lisa Gutierrez</b>, VP<br/>&amp; Chief Diversity &amp; Inclusion Officer, Indiana University Health</p> <p><b>F. Kevin Hackett, M.D.</b><br/>Chairman, Department of Cardiovascular Medicine, Mount Carmel Health System</p> | <p><b>Mark Hackman, M.D.</b><br/>Physician Advisor<br/>Mount Carmel Health System - East</p> <p><b>Monsignor Joseph Hendricks</b>, Pastor<br/>St. Bridgid of Kildare Catholic Church</p> <p><b>Jim Karam</b>, CEO<br/>Reddington Partners</p> <p><b>Lorraine Lutton</b><br/>President &amp; CEO<br/>Mount Carmel Health System</p> <p><b>Melissa McCarthy</b><br/>Managing Director,<br/>Head of the Corporate Advisory Center<br/>PNC Financial Services Group</p> <p><b>Meaghan McCurdy</b><br/>Director of Culture,<br/>Diversity and Inclusion<br/>Kimball Midwest</p> <p><b>Rebecca Nelson</b><br/>Community Advocate</p> <p><b>Sr. Joy O'Grady, CSC</b><br/>Family Counselor, St. Bridget's Convent</p> <p><b>Kevin Ryan</b>, VP<br/>Egan-Ryan Funeral Home</p> <p><b>Jerry Saunders, Sr.</b><br/>CEO, Africentric Personal Development Shop</p> <p><b>Deanna Stewart</b><br/>President, Mount Carmel Foundation<br/><i>ex officio</i></p> <p><b>John Trydahl</b>, VP<br/>Institutional Services<br/>Loomis, Sayles &amp; Company</p> <p><b>Nancy Whetstone</b><br/>Development Director<br/>Canine Companions for Independence</p> |
|--|---|

# Mount Carmel Foundation

3100 Easton Square Place, Suite 300, Columbus, OH 43219  
www.mountcarmelhealth.com/mount-carmel-foundation



## Mission Statement:

We serve together in the spirit of the Gospel as a compassionate and transforming healing presence within our communities. The Mount Carmel Foundation stewards contributions in support of the Mount Carmel Health System, bringing hope, healing, and compassionate healthcare to those in need.

## INDIVIDUAL CONTRIBUTIONS

There are a variety of ways that individuals can engage with Mount Carmel including:

- **Directing a gift** to your individual area of passion. More than 100 programs exist, including Street Medicine, College of Nursing scholarships, Hospice/Palliative Care and other patient and family support programs. Select the area that is most meaningful to you and have confidence knowing that 100% of your gift will go to the program you designate.
- **The Guardian Angel program** provides a unique way for a patient and/or family to pay tribute to a special caregiver. You can share your story highlighting the special care provided. Mount Carmel colleagues who have earned this distinction proudly wear their Guardian Angel wings on their ID badge.
- **Estate giving**, made through your will or trust, leaves a special legacy that has a significant impact in helping Mount Carmel deliver exceptional healthcare to all.
- **Want to make a difference with your time?** Mount Carmel volunteers, of all ages, provide compassionate support to our patients, families, and colleagues, helping to answer questions, escorting you to the right location, and serving side by side with colleagues in hospital units.

## CORPORATE CONTRIBUTIONS

Mount Carmel recognizes that there is no "one size fits all" for corporations and each partnership is approached on a tailored basis.

- **Does your company have defined Corporate Strategic Responsibility (CSR) goals?** Mount Carmel partners with each company individually to develop a corporate engagement plan that aligns with CSR priority areas of focus.
- **Corporations can direct their giving** to the areas that are most impactful to the corporate mission. Mount Carmel offers a variety of programs and services across the healthcare spectrum. Reports detailing the impact of giving are available and can be shared with associates, customers, and the community.
- **Corporations also have the option to engage associates with high impact product drives.** Mount Carmel's Street Medicine program is a vital part of central Ohio's healthcare safety net, providing free quality care to more than 6,000 people annually. Corporations can give back by hosting an associate collection drive for items to help support basic needs of individuals who are most vulnerable and homeless in our community.
- As appropriate, Mount Carmel is proud to share corporate engagement photos on our social media channels.

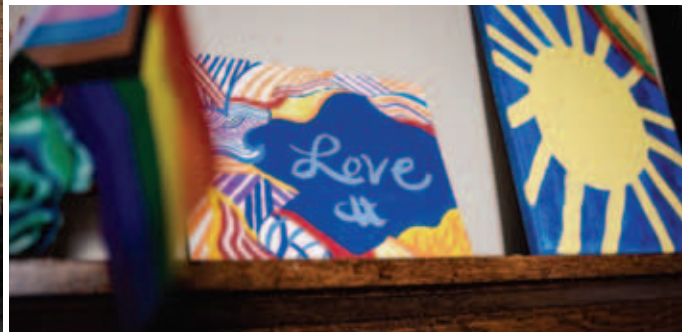


# Netcare Access

199 South Central Avenue, Columbus, OH 43223  
(614) 276-CARE (2273) | [netcareaccess.org](http://netcareaccess.org)



Clients staying in our Crisis Stabilization Unit can enjoy the on-site healing garden for respite and counseling sessions.



Clients stay with us after a crisis or trauma and Netcare offers therapeutic activities such as art, music, or games in addition to strategies for coping before a client may be ready to return home.



**Brian Stroh, MD**  
CEO & Medical Director



## GIVING OPPORTUNITIES:

Here are some ways in which community members can support Netcare Access.

- Individual giving
- Corporate giving
- Endowment fund through The Columbus Foundation
- Sponsorship opportunities
- In-kind donations

## 2022 BOARD OF DIRECTORS

- Sid Geller**, Chair  
Sid Geller & Associates LLC
- Kitty Wilcox Soldano, Ph.D.**, 2nd Vice Chair
- Patrick A. Devine**, Immediate Past Chair  
Ice Miller
- Candy Carr**  
The P.E.E.R. Center
- Jacqueline Doodley**  
Lighthouse Behavioral Health Solutions
- Matthew Herchik**  
WCMH-TV, NBC4
- Shirley Rogers-Reece**  
SR & Associates, LLC
- Mona Robinson, Ph.D., LPCC-S, LSW, CRC**  
Ohio University
- Lee Shackelford, MD**  
Psychiatrist
- Tim Tullis**  
Kegler, Brown, Hill, and Ritter  
Netcare Foundation

## NETCARE FOUNDATION BOARD:

- Danielle Vandergriff**, Chair  
Ohio Network of Children's Advocacy Centers
- Kathy Olson**, 1st Vice Chair  
Attorney-at-Law
- Erica Schucht**, 2nd Vice Chair  
Columbus Springs Hospital
- Katie Cape**  
RiverVista
- Tina Colter**  
Columbus Springs Hospitals
- Karen Core**  
Ohio Hospital for Psychiatry
- Jennifer McConaughy**  
Ethan Crossing Springfield
- Phil McCorkle**  
Presidio
- Samantha Rice**  
Northwest Mutual
- Lisa Rose**  
SUN Behavioral Health
- Shelli Sloan**  
AEP

## Mission Statement:

Founded in 1972 and celebrating a half-century of service, Netcare is a 501(c)(3) nonprofit centered on caring for those either in mental health and/or substance abuse crisis, or with significant ongoing behavioral health needs. Services are rendered without regard to insurance or payment.

Our signature programs and services include: 24/7 Crisis Line (614-276-CARE) and answering calls, texts and chats for the 9-8-8 Suicide Prevention Lifeline, Crisis Stabilization Unit, Miles House residential treatment, ROW ONE, Community Crisis Response, Forensic Assessment Services, Family Psychological Services, Non-Crisis Assessment Services, Probate Pre-Screening and Developmental Disabilities Services.

We serve more than 10,000 adults annually through on-site and community-based services and handle more than 200,000 phone calls to our 24/7 Crisis Line.

## CORPORATE OPPORTUNITIES



Corporations are able to participate at many different levels.

- Corporate donations
- Event sponsorship
- Board stewardship

## GIVE WHAT YOU CAN

We graciously accept in-kind donations for our clients at our treatment facilities. Items like art supplies, movies, or board games. Clothing items and blankets must be in new condition. We accept all sizes for men and women, most needed items include socks, hats, gloves, shirts and undergarments. We also welcome gently used books and magazines.

## VOLUNTEER OPPORTUNITIES



Due to the nature of the care we provide, we do not accept volunteers to work with our clients directly. However, we do host events throughout the year for activities that can support our patients and their care. If you'd like to speak with us about a fundraising event or a potential volunteer opportunity, please email [PR@Netcareaccess.org](mailto:PR@Netcareaccess.org) or call **614.278.0109**.





**Daniel B. Ginis**  
Chief Development Officer



**GIVING OPPORTUNITIES:**

The Ohio Living Foundation's sophisticated team of fundraising professionals can help you plan the gift that's right for you.

- Individual giving
- Planned giving
- Corporate giving
- Foundation grants
- Estate donations
- Gifts of real estate

**2022 BOARD OF DIRECTORS**

- Richard Frenchie**, Chair  
Health Executive
- Mark Baltimore**  
CEO, Global Rhino
- Bruce Boyd**  
Retired, President/CEO, Amos Media
- Mary Cochran**, Assistant Secretary  
Retired, Senior Living Administration
- Dennis R. Deibel**  
Retired, Elementary Teacher
- Dennis Eckart**  
President, North Shore Associates LLC
- Daniel B. Ginis**  
Chief Development Officer, Ohio Living Foundation
- Laurence C. Gumina**  
Chief Executive Officer, Ohio Living
- David Hartsook**  
Commercial Real Estate Advisor, CBRE, Inc.
- Bob Parker**, ex-officio  
Retired, Corporate Controller – The Stolle Corp./Aloca, Inc.
- Bonnie Quist**  
Retired, Higher Education Administrator, Franklin University
- Sheldon Taft**  
Retired, Partner, Vorys Sater Seymour & Pease LLP
- Rev. Christine White**  
Retired, Pastor
- Barney Wright**, Assistant Treasurer  
Treasurer, Warren County, Ohio

# Ohio Living Foundation

9200 Worthington Rd Suite 300, Westerville, OH 43082  
(614) 888-7800 | [ohioliving.org](http://ohioliving.org)



**Mission Statement:**

The Ohio Living mission is to provide adults with caring and quality services toward the enhancement of physical, mental and spiritual well-being consistent with the Christian Gospel.

**WHAT WE DO**

Family caregiving is not always possible, especially when that care is needed around the clock. We are honored to offer the highest quality care and services – guided by compassion and faith, not profit – to over 86% of Ohioans. Our services range from housing and care options in one of our life plan communities to home health, palliative medicine and hospice support for adults, wherever they live in our 51-county service area:

- Long-term nursing care
- Memory care
- Short-term rehabilitation
- Outpatient therapy
- Independent living
- Assisted living
- Home health
- Hospice
- Palliative medicine

The Ohio Living Foundation partners with donors to provide charitable support for the people projects and programs of Ohio Living.

**DONOR IMPACT**



Donors make a valuable impact on Ohio Living's residents and patients by supporting some of the most important things in their lives. These are things that promote health and wholeness, that expand horizons and that bring people together:

- The Life Care Commitment, providing financial peace of mind
- Make it Happen moments, a wish fulfillment program for hospice
- Pet therapy for comfort and companionship
- Culinary experiences from expert chefs that keep people looking forward to meals
- Educational programs that feed lifelong curiosity
- Spiritual spaces and ecumenical opportunities for worship and study
- Beautiful and modern environments to help people feel at home
- Art and music therapy to nurture creativity
- And so much more!

Donors generously give each year to make life better for the thousands of residents and patients served by Ohio Living. Please join us in our mission!  
[ohioliving.org/foundation](http://ohioliving.org/foundation)



## THE LIST

Compiled by Robin Smith  
614-220-5444  
rlsmith@bizjournals.com

## FOUNDATIONS

FIRST PUBLISHED SEPTEMBER 30, 2022

RANKED BY TOTAL ASSETS IN 2020 TAX YEAR

Foundation name/prior rank <sup>1</sup> Website <sup>2</sup>	Address Phone	Assets <sup>3</sup>	Total revenue <sup>4</sup>	Total expenditures <sup>5</sup>	Ruling year	Fiscal year-end	Top officer or contact person
<b>1</b> Columbus Foundation columbusfoundation.org	1234 E. Broad St. Columbus, OH 43205 614-251-4000	\$2.24 billion	\$316.15 million	\$211.43 million	1937	Dec. 31, 2020	Douglas Kridler
<b>2</b> Osteopathic Heritage Foundation osteopathicheritage.org	6785 Bobcat Way #230 Dublin, OH 43016 614-737-4370	\$283.93 million	\$10.33 million	\$35.74 million	2004	Dec. 31, 2020	Terri Donlin Huesman
<b>3</b> Foundation of the Catholic Diocese of Columbus catholic-foundation.org	257 E. Broad St. Columbus, OH 43215 614-443-8893	\$225.8 million	\$24.78 million	\$9.97 million	1984	June 30, 2021	Loren Brown
<b>4</b> Columbus Jewish Foundation columbusjewishfoundation.org	1175 College Ave. Columbus, OH 43209 614-338-2365	\$166.72 million	\$14.8 million	\$11.45 million	1955	June 30, 2021	Joel Marcovitch
<b>5</b> Licking County Foundation thelcfoundation.org	30 N. 2nd St. Newark, OH 43058 740-349-3863	\$128.27 million	\$5.18 million	\$5.11 million	2001	Dec. 31, 2020	Connie Hawk
<b>6</b> Columbus Medical Association Foundation cmafiohio.org	1390 Dublin Rd. Columbus, OH 43215 614-240-7410	\$98.26 million	\$1.03 million	\$3.15 million	1965	Dec. 31, 2020	Robert Falcone
<b>7</b> American Electric Power Foundation aep.com/community/ourgiving/aepfoundation	1 Riverside Plz. Columbus, OH 43215 614-716-2605	\$85.48 million	\$6.38 million	\$36.4 million	2006	Dec. 31, 2020	Teresa McWain
<b>8</b> Nationwide Foundation nationwide.com	1 W. Nationwide Blvd. Columbus, OH 43215 614-249-4310	\$81.45 million	\$41.45 million	\$42.38 million	1961	Dec. 31, 2020	Karen Blickley
<b>9</b> Dave Thomas Foundation for Adoption davethomasfoundation.org	4900 Tuttle Crossing Blvd. #100 Dublin, OH 43016 800-275-3832	\$65.37 million	\$39.21 million	\$28.82 million	1992	June 30, 2021	Rita Soronen
<b>10</b> Fairfield County Foundation fairfieldcountyfoundation.org	162 E. Main St. P.O. Box 159 Lancaster, OH 43130 740-654-8451	\$59.7 million	\$5.01 million	\$3.02 million	1989	Dec. 31, 2020	Amy Eyman
<b>11</b> Cardinal Health Foundation cardinalhealth.com	7000 Cardinal Pl. Dublin, OH 43017 614-757-2361	\$49.84 million	\$4.32 million	\$5.43 million	2001	June 6, 2021	Jessica Mayer
<b>12</b> Ohio State Bar Foundation osbf.net	P.O. Box 16562 Columbus, OH 43216 614-487-4444	\$49.77 million	\$3.14 million	\$2.36 million	1951	Dec. 31, 2020	Mark Kitrick
<b>13</b> NiSource Charitable Foundation nisource.com	290 W. Nationwide Blvd. Columbus, OH 43215 614-460-4843	\$38.18 million	\$17.11 million	\$7.69 million	1990	Dec. 31, 2020	Sophia Fifner
<b>14</b> Thomas J. Evans Foundation NA	P.O. Box 4217 Newark, OH 43058 740-349-8276	\$22.74 million	\$2.42 million	\$421,208	1965	Oct. 31, 2021	Sarah Wallace
<b>15</b> Macbea Foundation NA	52 E. Gay St. Columbus, OH 43215 614-464-8295	\$20.6 million	\$1.27 million	\$1.29 million	2010	Dec. 31, 2020	George Hoffman
<b>16</b> Community Foundation of Union County unioncountyfoundation.org	126 N. Main St. Marysville, OH 43040 937-642-9618	\$17.21 million	\$4.67 million	\$1.3 million	1962	Dec. 31, 2020	David Vollrath
<b>17</b> Community Foundation of Delaware County delawarecf.org	737 Enterprise Dr. #A Lewis Center, OH 43035 614-764-2332	\$17.13 million	\$2.57 million	\$1.59 million	1995	Dec. 31, 2020	Chris Baker
<b>18</b> Jon and Susan Diamond Family Foundation NA	2 Miranova Pl. #600 Columbus, OH 43215 786-216-7356	\$11.93 million	\$1,500	\$1.56 million	1997	Dec. 31, 2020	Susan Diamond
<b>19</b> Honda of America Foundation ohio.honda.com	24000 Honda Pkwy. Marysville, OH 43040 937-645-8354	\$10.41 million	\$790,923	\$776,518	1981	Dec. 31, 2020	Bobbie Jo Trittschuh
<b>20</b> Charleys Kids Foundation charleyskids.org	2500 Farmer Dr. #140 Columbus, OH 43235 614-923-4700	\$8.26 million	\$1.05 million	\$516,925	2018	Dec. 31, 2020	Helena Dameron
<b>21</b> R.S. Hosler Memorial Educational Fund NA	P.O. Box 5 Ashville, OH 43103 740-983-2557	\$7.65 million	\$357,733	\$494,023	1981	Dec. 31, 2020	Leo Hall
<b>22</b> Women's Fund of Central Ohio womensfundcentralohio.org	2323 W. 5th Ave. #230 Columbus, OH 43204 614-225-9926	\$6.77 million	\$2.63 million	\$1.18 million	2002	June 30, 2021	Kelley Griesmer
<b>23</b> Ohio Children's Foundation ohiochildrensfoundation.org	486 City Park Ave. Columbus, OH 43215 614-461-1939	\$6.54 million	\$671,142	\$691,614	1990	Dec. 31, 2020	Barbara Miller
<b>24</b> Wexner Foundation wexnerfoundation.org	8000 Walton Pkwy. #100 New Albany, OH 43054 614-939-6060	\$5.79 million	\$10.73 million	\$10.69 million	1994	Dec. 31, 2020	Barbara Abrahamson
<b>25</b> George Foundation NA	2627 Johnston Rd. Columbus, OH 43220 614-228-1541	\$4.47 million	\$320,158	\$448,936	1982	Dec. 31, 2020	Jack George

<sup>1</sup> \*-Not ranked last year (applies to print List only).<sup>2</sup> NA-Not applicable.<sup>3</sup> Form 990 Part I line 20 or Form 990PF Part II line 16b, book value of assets.<sup>4</sup> Form 990 Part I line 12 or Form 990PF Part I line 12a.<sup>5</sup> Form 990 Part I line 18 or 990PF Part I line 26a.

## CLOSER LOOK

**\$3.73B**Total assets, all listed  
foundations.**\$437.45M**Total expenditures, all listed  
foundations.**\$531.36M**Total revenue, all listed  
foundations.TOP FOUNDATIONS  
BY 2020 REVENUEColumbus  
Foundation \$316.15MNationwide  
Foundation \$41.45MDave Thomas  
Foundation for  
Adoption \$39.21MFoundation of the  
Catholic Diocese  
of Columbus \$24.78MNiSource  
Charitable  
Foundation \$17.11MColumbus Jewish  
Foundation \$14.8M

Wexner Foundation \$10.73M

Osteopathic  
Heritage  
Foundation \$10.33MHuntington  
Foundation \$9.6MAmerican Electric  
Power Foundation \$6.38M

## ABOUT THE LIST

List includes foundations  
that make grants via an  
application process.  
Foundations that make  
grants only to pre-selected  
organizations are not  
included here.Information was  
obtained from IRS forms  
990 and 990-PF, from  
data extracted from these  
forms via ProPublica's  
Nonprofit Explorer or from  
forms provided by the  
organizations. Organizations  
which did not have  
information available online  
or respond to a request for  
information are not included  
here.Dollar amounts of  
more than \$1 million are  
automatically rounded;  
however, rankings are based  
on unrounded numbers. In  
case of ties, organizations  
are listed alphabetically.SUBSCRIBERS CAN  
ACCESS LISTS ONLINESubscribers can access  
all lists online. Sign in at  
ColumbusBusinessFirst.com,  
choose Lists & Leads in the  
menu near the top of the  
page.





**Karen Morrison**

President, OhioHealth Foundation  
and Senior Vice President,  
OhioHealth



**GIVING OPPORTUNITIES:**

Here are some ways in which community members can support the OhioHealth Foundation.

- Individual gifts
- Corporate and organizational gifts
- Event sponsorships
- Estate gifts
- Grant funding
- Memorial and tribute gifts
- Volunteer
- Serve on an OhioHealth Foundation development board

**2022 OHIOHEALTH FOUNDATION EXECUTIVE COMMITTEE**

**Linda Hondros, Chair**

**Gifford Weary, PhD**  
Secretary and Treasurer

**Steve Markovich, MD (Ex-Officio)**  
President and CEO, OhioHealth

**Karen Morrison (Ex-Officio)**  
President, OhioHealth Foundation  
and Senior Vice President,  
OhioHealth

**Karen Chester**

**Eric Jones**

**Nancy Recchie**

**David Schwarz**

**Valerie Swiatek**

# OhioHealth Foundation

3430 OhioHealth Pkwy • Columbus, OH 43202 • (614) 544-GIVE (4483)  
Fax (614) 544-4090 • OhioHealth.com/Foundation



**Mission Statement:**

To improve the health of those we serve.

**ABOUT OHIOHEALTH**

Serving communities since 1891, OhioHealth is a family of 35,000 associates, physicians and volunteers across 12 hospitals and more than 200 ambulatory sites, as well as hospice, home health, medical equipment and other health services spanning 47 counties.

The OhioHealth Foundation is supported by generous donors, including members of the community, OhioHealth associates, corporations and organizations. Their philanthropic gifts bring OhioHealth's mission to life by advancing medical research, enhancing medical care and enriching educational programs.



**OhioHealth hospitals include:**

- OhioHealth Berger Hospital
- OhioHealth Doctors Hospital
- OhioHealth Dublin Methodist Hospital
- OhioHealth Grady Memorial Hospital
- OhioHealth Grant Medical Center
- OhioHealth Grove City Methodist Hospital
- OhioHealth Hardin Memorial Hospital
- OhioHealth Mansfield Hospital
- OhioHealth Marion General Hospital
- OhioHealth O'Bleness Hospital
- OhioHealth Riverside Methodist Hospital
- OhioHealth Shelby Hospital

**GRATEFUL HEARTS CHANGING LIVES**

Your gift to the OhioHealth Foundation supports new technologies, funds vital community programs and services, and helps us pursue innovations in medicine while continuing to improve the health of those we serve. You may designate a gift of any size to the care site or clinical program of your choice, or we can direct your gift to the programs in greatest need.

**A few of our specialties include:**

**Cancer:**

Our approach to cancer care involves a partnership of experts, including surgical, medical and radiation oncologists, and specialists in radiology, pathology, palliative care, hospice, nursing, patient navigation, research and genetic counseling.

OhioHealth is also Ohio's first certified member of the MD Anderson Cancer Network®, a program of MD Anderson Cancer Center.

**Neuroscience:**

OhioHealth is home to one of the nation's largest and highest-ranked neuroscience programs. We deliver unparalleled expertise and care to patients with stroke, multiple sclerosis, epilepsy, Parkinson's disease and Alzheimer's disease at more than a dozen locations across central Ohio, including our new OhioHealth Neuroscience Center at Riverside Methodist Hospital.

**Heart and Vascular:**

Our heart and vascular team combines experience, expertise and innovation to provide exceptional care 24/7, from

routine appointments to the most complex procedures. With more than 100 physicians and 30 locations across 47 counties, no one cares for more hearts or cares for them better than OhioHealth.

**Community Health:**

Community health partnerships advance health equity in the communities we serve. We've created programs and partnerships to bring primary care, women's health services and prenatal care, annual screenings, and educational resources to Ohio communities in greatest need.

**Women's Health:**

Our women's health program paves the way to health for women in every stage of their lives – from preventive care to maternity and beyond.

**AT THE HEART OF GIVING**

Make a meaningful impact through the OhioHealth Foundation.

We believe philanthropy has a lasting effect on the lives of others. Your generous gift, regardless of size, will support our efforts to improve the health of those we serve.

- Planned Giving
- Tribute Gifts
- Corporate Contributions
- Grants
- Annual Campaigns

To make a gift or learn more about the OhioHealth Foundation, call (614) 544-GIVE (4483) or visit OhioHealth.com/Foundation.





# BizSpotlight

Our multi-channel press release **NOW SUPPORTS VIDEO!**

BizSpotlight provides your company exposure to a targeted audience of local Business Journal readers – executives and decision makers like yourself. With guaranteed promotion in both print and online, our multi-channel press release increases your brand awareness and improves search engine visibility.

## NEW! FEATURED LISTINGS



**INCREASE INTERACTION**  
WITH VIDEO



**EXPANDED PRINT PROFILE WITH**  
PHOTO & 1,000 CHARACTERS



**PROMINENT EXPOSURE**  
ONLINE AND IN EMAIL



SHARE YOUR COMPANY NEWS  
WITH UP TO **5,000 CHARACTERS**



INCLUDE YOUR **LOGO & IMAGE** OF YOUR CHOICE



GAIN **ADDITIONAL EXPOSURE** IN  
OUR WEEKLY EMAIL NEWSLETTER



INCLUDE A **CALL-TO-ACTION LINK** TO DRIVE RESULTS

## INVEST IN YOUR COMPANY WITH BIZSPOTLIGHT

LEARN MORE AT: [columbusbusinessfirst.com/bizspotlight](http://columbusbusinessfirst.com/bizspotlight)

OR CONTACT DAWN SHEEHAN LEWIS | [DLEWIS@BIZJOURNALS.COM](mailto:DLEWIS@BIZJOURNALS.COM) | 410.905.1934



# The James



**THE OHIO STATE UNIVERSITY**  
COMPREHENSIVE CANCER CENTER

## GIVING OPPORTUNITIES:

When you give to the OSUCCC – James, you help our oncologists and cancer researchers pursue promising ideas, create knowledge and develop methods of cancer prevention, detection, diagnosis and treatment. Ways of contributing to the OSUCCC – James include:

- Annual Giving
- Gift Planning
- Community Partners
- Corporate Giving
- Endowments
- Memorial/Tribute and Special Occasion Gifts

## JAMES FOUNDATION BOARD MEMBERS

Helena Anderson  
Jeri B. Block  
Kenton R. Bowen  
Michael Carpenter  
William H. Carter  
David E. Cohn, MD, MBA, FACHE  
Jeg Coughlin, Jr.  
Dale Darnell  
Sander Flaum  
Ron Ford  
Steven G. Gabbe, MD  
Libby Germain  
Sarah B. Hatcher  
Cindy Hilsheimer  
Lisa A. Hinson  
Peter Z. Horvath  
Irene J. Levine  
G. Scott McComb  
Diane Nye  
Marnette Perry  
Raphael E. Pollock, MD, PhD, FACS  
Richard R. Porter  
Mark Puskarich  
Luciana Ramsey  
Daniel H. Rosenthal  
Charles E. Ruma  
Mark C. Ryan  
Amy Shepherd  
Julie Sloat  
Judith E. Tuckerman  
Doug Ulman  
Robert White, Jr.  
Alec Wightman  
Jay Worly

## EMERITUS MEMBERS

William B. Farrar, MD  
Cheryl Krueger  
Jane T. McCoy  
James V. Pickett  
David E. Schuller, MD

## PROFILE SPONSOR:



# The Ohio State University Comprehensive Cancer Center – Arthur G. James Cancer Hospital and Richard J. Solove Research Institute (OSUCCC – James)

460 W. 10th Avenue, Columbus, Ohio 43210

## Mission Statement:

The Ohio State University Comprehensive Cancer Center – Arthur G. James Cancer Hospital and Richard J. Solove Research Institute (OSUCCC – James) strives to create a cancer-free world by integrating scientific research with excellence in education and patient-centered care, a strategy that leads to better methods of prevention, detection and treatment. Ohio State is one of only 53 National Cancer Institute (NCI)-designated Comprehensive Cancer Centers and one of only a few centers funded

By the NCI to conduct both phase I and phase II clinical trials on novel anticancer drugs provided by the NCI. As the cancer program's 356-bed adult patient-care component, The James is one of the top cancer hospitals in the nation as ranked by U.S. News & World Report and has achieved Magnet® designation, the highest honor an organization can receive for quality patient care and professional nursing practice. With 21 floors and more than 1.1 million square feet, The James is a transformational facility that fosters collaboration and integration of cancer research and clinical cancer care. For more information, please visit [cancer.osu.edu](http://cancer.osu.edu).



## EXTREME CARE THAT SAVES LIVES

"I shouldn't even be here, but eight years later, I am," says Sarah Eagleson, who was diagnosed with Stage 3C ovarian cancer and received what she describes as "extreme care" from the OSUCCC – James.

"Extreme care is what you want," she explains. "You don't want to be just a 'customer,' and you're not at The James." Sarah shares several examples of this next-level kind of support. First and foremost is the determination to save her life shown by her gynecologic oncologist, David O'Malley, MD. "My cancer was everywhere," she says. "During my first surgery, he could have just sewn me up and sent me home, but he didn't. He operated for over six hours, and he's helped me continue to fight each time the cancer has returned."

In so many smaller ways, the staff at the OSUCCC – James has also made a tremendous impact. When Sarah's hair was falling out from chemo, a nurse came to her room with scissors, a shaver – and compassion. Another nurse, who had survived cancer herself, made sure Sarah knew she wasn't alone and could make it through. "Hearing someone tell you



about their own experience and reassuring you that you're going to be OK is such a gift," she says. Then there's the friendly conversation and positive attitude of a transporter who was taking Sarah for a test, or the simple moment of kindness shown by a med tech when Sarah was beyond exhaustion. "I'm not a crier by nature," she says, "But I was just so tired during a blood draw following my weekly

infusion, and I just couldn't keep it in. The tech that day let me know I could sit and rest if I needed, and more importantly, she told me that as terrible as this particular day was, it would get better. It was everything I needed in that moment."

Sarah's path through cancer has been difficult. It has returned five times and traveled to her brain stem. She's faced countless rounds of chemo, including a related allergic reaction and infection in the abdominal port used to deliver chemotherapy drugs. She's fought extreme fatigue, had a blood transfusion and dealt with double vision, slurred speech and changes in her balance. "Through it all, every time I've said I need something, there's always been someone at The James who steps up to help," Sarah says. "I've never felt like a number, and I've never been rushed along."

She quickly adds, "I'm crazy about The James – they keep you alive. Statistics may say there's a 2% chance of survival, but with the kind of extreme care that I've gotten from nearly everyone at The James, there's no reason that 2% can't be me."

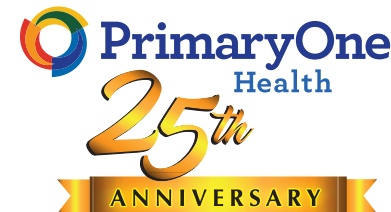


# PrimaryOne Health

2780 Airport Drive, Suite 100, Columbus OH 43219  
614-645-5500 • [www.primaryonehealth.org](http://www.primaryonehealth.org)



**Charleta B. Tavares**  
Chief Executive Officer



**GIVING OPPORTUNITIES:**

Here are some ways in which community members can support PrimaryOne Health.

- Healthcare Justice Scholarship Fund- The Scholarship fund will support racial, ethnic and cultural under-represented populations who are entering or advancing in the healthcare professions.
- PrimaryOne Health's Mobile Health Center Sponsorship.
- PrimaryOne Health's General Operating Mission Fund
- Capital Expansion Projects- Individual and Corporate Naming Opportunities

**2022 BOARD OF DIRECTORS**

*Executive Committee*

- Emily Fisher**  
Board Chair
- Dr. Mary Bynum**  
Secretary
- Russell J. Barney**  
Treasurer
- Diana Alexander
- Jennifer Beard
- Robert Bensonhaver
- Jasilika G. Davidson
- Adrian Frederick
- Miski Issak
- Ephraim Laidley, Jr.
- Erica McGriff
- Dustin McKee
- Caitlin Purk
- Kyla Ross
- David Sanchez



**FUNDING OPPORTUNITIES**

PARTNERSHIP FUNDING FOR

## Three New Health Center Community Pharmacies

*Improving health in the Central Ohio Region*

PrimaryOne Health currently serves over 44,000 residents in Central Ohio. A significant number of these residents have barriers in accessing medical, behavioral/mental health, dental, vision, and pediatrics, pharmacy, physical therapy, and specialty and support services. Over the years, PrimaryOne Health has expanded the number of health centers to provide residents with increased access to services at twelve neighborhood health center locations, and four mobile health centers. However, none of the health centers has a comprehensive pharmacy, and the demand for pharmaceutical services in the community has grown.

Community pharmacies play an important role in filling continuity of health care gaps, and this expanded role of community pharmacists is crucial on the front line of health care. Community pharmacies and pharmacists are critical members of the patient care team and have proven to provide better results, and help keep people healthier.

The clinical services offered by pharmacists have been shown to produce better outcomes at lower overall costs in patients with diabetes, high blood pressure, and other chronic diseases. Approximately one quarter of hospital readmissions are related

to medication compliance usage and deemed preventable. Pharmacists have been shown to prevent these adverse medication-related issues, thereby preventing unnecessary returns to the hospital. Additionally, as a federal qualified health center, our community pharmacies will provide patients with discounts and sliding fees.

PrimaryOne Health is excited to announce their community pharmacy expansion program, constructing three new community pharmacies at our larger health centers. One on the Eastside, Southside and Westside of the City of Columbus.

There are many opportunities to support the new community pharmacies. We hope you and your business will give generously.

- Together we will change the health and lives of Central Ohioans
- Together we can make a greater impact in our community
- Together we can do something for the greater good
- Together we can collaborate and make a difference

**HEALTHCARE JUSTICE AWARDS 2023**

## Advancing Diversity in Healthcare

PrimaryOne Health annually recognizes an individual or a partner organization/agency who embodies the traits of an advocate for healthcare justice—dedication, determination, leadership, and courage. This award was established to celebrate individuals and partners in our community who work to.

- Expand access to healthcare & wellness services;
- Eliminate health disparities and promote healthcare justice;
- Promote cultural & linguistic competence in healthcare; and/or
- Break down cultural & social barriers to quality healthcare

**Our Beneficiary**

Our beneficiary for the 9th Annual Healthcare Justice Awards is the Healthcare Justice Scholarship Fund. Started in 2021 at the Columbus Foundation, the Healthcare Justice Scholarship benefits racial, ethnic, and cultural underrepresented populations pursuing careers in healthcare. The scholarship fund will increase opportunities: educate, train, and employ more diverse individuals; and allow for more diverse perspective in the healthcare field.

For more information on donating to the Healthcare Justice Scholarship Fund visit [www.primaryonehealth.org/hcja22](http://www.primaryonehealth.org/hcja22)

Or Contact Susan Brewer at [susan.brewer@primaryonehealth.org](mailto:susan.brewer@primaryonehealth.org)



Columbus Business Journal





**Paul L. Huttlin**  
Executive Director & CEO



### GIVING OPPORTUNITIES:

Here are some ways in which community members can support Recreation Unlimited.

- Corporate Giving
- Individual Giving
- Building/Endowment
- Campaign Contribution
- In-kind Contribution
- Event Sponsorship
- Planned Giving
- Program Grant
- Volunteering

### 2022 BOARD OF DIRECTORS

Doug Austin  
 Scott Barbour  
 Michael Barren, Secretary  
 Tim Bechtold  
 Mark Berens  
 Matt Cacciato  
 Greg Castignola  
 Walt Dennis  
 Don DePerro  
 Chris Eckels  
 Harry Farver  
 Chris Fidler  
 David French  
 John B. Gerlach, Jr.  
 Rick Germain  
 Deborah Liebert Karl, Vice Chair  
 Craig Kasper  
 Karl Klamar, MD  
 Pamela Krivda  
 Cliff Larivey  
 Rick LaVeer  
 David Lloyd  
 Bob Martin, MD  
 Joe Patrick, Treasurer  
 Ginni Ragan  
 Jane Robinson  
 Charles Ruma, Chair  
 Walter Samora, MD  
 Robin Sears  
 Eric Stewart  
 Kelly Turley  
 Michael Van Treese  
 Linda Watson  
 Ken Westerheide, MD  
 Steve Wiseman, DO

# Recreation Unlimited

7700 Piper Road | Ashley, Ohio 43003 | Phone: 740-548-7006 | Fax: 740-747-2640  
 info@recreationunlimited.org | www.recreationunlimited.org



### Mission Statement:

Founded in 1958, Recreation Unlimited Farm and Fun, Inc. (Recreation Unlimited) is a 501(c)3 not-for profit organization serving individuals with physical and developmental disabilities and health concerns and supported through the strategic and development efforts of the Recreation Unlimited Foundation. The mission of Recreation Unlimited is to provide year-round programs in sports, recreation and education while building self-confidence, self-esteem and promoting positive human relations, attitudes, and behaviors.

### Vision Statement:

Unlimited dreams for individuals with disabilities and health concerns year-round.

Corporations are able to participate at many different levels, including event sponsorship, corporate donations, program grants, in-kind donations and volunteer opportunities. The three major Recreation Unlimited Fundraising events for 2023 are as follows:

## CORPORATE CONTRIBUTIONS

### Flavors of the Vine Wine Tasting & Auction Friday, February 10, 2023

Now in its thirty-first year, Flavors of the Vine is Columbus' premiere wine tasting event attracting wine distributors throughout central Ohio and introducing over 150 wines from the finest American and international wineries. This year's event will be held at the Hilton Columbus/Polaris. Approximately 400 wine lovers attend this spectacular fundraising event benefiting Recreation Unlimited's camps and camper scholarship program.

### Star Light, Star Night, June 7, 2023

Join us for the ninth annual Star Light, Star Night, an exclusive dinner and wine experience with a nationally or internationally known wine celebrity in support of the Recreation Unlimited camps and camper scholarship fund that will be held at Scioto Country Club. The event will feature a fantastic live auction with select wines and packages.

### Recreation Unlimited Invitational Golf Tournament, September 17 & 18, 2023

Play the course that is home to Jack Nicklaus' Memorial Tournament. This two day event is the best charity golf tournament in central Ohio. This event is our number one fundraiser that supports camp operations, camper scholarship fund, campus renovation, and capital improvements.

For sponsorship opportunities, tickets, or event information on any of the Recreation Unlimited special events, please call 740-548-7006 or email info@recreationunlimited.org.

### Campus Renovation

Over \$9.64 million in campus renovations and new construction have taken place on the Recreation Unlimited campus since 2004. Recreation Unlimited is proud to be debt free and financially strong with a modern, accessible and beautiful campus.

The most recent construction projects for 2022 included the construction of the Evelyn M. Liebert Guest Cottage and the Deborah Liebert Karl Guest Cottage. These Guest Cottages will be used for small groups and mission development user groups and Recreation Unlimited fulltime and seasonal associate needs. Additionally in 2022, renovations took place in the Dining Hall, and two program areas, the Accessible Stream Trail and the Pool Complex.

In order to maintain a first-class appearance and experience for those that are being served, Recreation Unlimited is very pleased and fortunate that the renovation and construction of campus buildings and program areas continue due to the generosity of donors.

## INDIVIDUAL CONTRIBUTIONS

Individuals are able to participate at many giving levels. The following are some ways in which individuals can support Recreation Unlimited camps and camper scholarship fund.

- |                       |                          |                      |
|-----------------------|--------------------------|----------------------|
| ■ Individual Gift     | ■ Building and Endowment | ■ Event Volunteer    |
| ■ Planned Gift        | ■ Campaign Contribution  | ■ Office Assistance  |
| ■ Endowed Scholarship | ■ In-kind Contribution   | ■ Facility Volunteer |





**GIVING OPPORTUNITIES:**

Thank you for supporting Ronald McDonald House Charities. Your support means the world to the families we serve. Please consider how you might support our mission through:

- Corporate Sponsorships
- Naming Opportunities
- Volunteering
- Donate Vehicles
- Make a Meal
- In-Kind Donations
- Legacy Giving

**2022 BOARD OF TRUSTEES****EXECUTIVE COMMITTEE:**

<b>President</b> <b>Bruce Burkholder</b> Partner, Isaac Wiles	<b>Larry Mastella</b> VP, National Director Strategic Sales Gilbane Building Company
<b>Immediate Past President</b> <b>Todd Alexander</b> President, Ragtime Development	<b>Secretary</b> <b>Patty McClimon</b> SVP, Chief Strategy Officer, Nationwide Children's Hospital
<b>Vice President</b> <b>Leslie Bumgarner</b> President & CEO, Telhio Credit Union	<b>2nd Vice President</b> <b>Brian Mortellaro</b> Owner/Operator, McDonald's
<b>Jack Clark</b> Retired, Nationwide Children's Hospital	<b>Tammy Roberts Myers</b> VP of External Communications Owner, Bath & Body Works, ReMax Apex
<b>Treasurer</b> <b>Lonni Dieck</b> Retired, AEP	<b>Mark Russell</b> President & CEO Ohio Mutual Insurance Group
<b>Tom Feeney</b> Executive Chairman Belron North America	<b>Paul Thompson</b> Retired, Nationwide
<b>Scott Holowicki</b> President McDonald's DMC Owner/Operator, McDonald's	<b>Greg Trimble</b> President, Trimble Insurance

<b>Derrick Bailey</b> Chief Sales Officer Telhio Credit Union	<b>Jill Wagner Kelly</b> EVP, Chief Distribution and Affiliate Officer Grange Insurance
<b>Matt Barnes</b> Anchor WCMH NBC4	<b>John Kennedy</b> AVP, Risk Leader Nationwide
<b>Wendy Bradshaw</b> Director of Community Engagement Safelite	<b>John Kessler</b> EVP & Chief Strategy Officer Encova Insurance
<b>Brian Brooks</b> President/Co-Owner E.E. Ward Moving & Storage	<b>Dr. Cathann Kress</b> VP for Agricultural, Dean, CFAES The Ohio State University
<b>Frank Buccì</b> President CHEMCOTE	<b>Gail Marsh</b> SVP, Faculty, Fisher College of Business The Ohio State University
<b>Dr. Timothy Cripe</b> Chief, Division of Pediatric Hematology/Oncology/BMT Nationwide Children's Hospital	<b>Miranda Morgan</b> Partner Ice Miller LLP
<b>Linda Cummings</b> Crane Family Office Manager/CFO Crane Group Co.	<b>Rich Porello</b> President, Auto Finance & Dealer Services Huntington National Bank
<b>Jim Davis</b> Physician Relations & Recruitment Mount Carmel Health System	<b>Erin Gilchrist Rugg</b> SVP Marketing & Business Development TSOA
<b>Shawna Davis</b> VP, External Affairs & Foundation Operations Ohio Health	<b>Annela Rumfola</b> SVP, CIO Medical Segment Cardinal Health
<b>Miranda Gill-Delatore</b> VP, CoverMyMeds	<b>Holly Snyder</b> President Nationwide Life
<b>Matt Harper</b> Owner/Operator McDonald's	<b>Ryan Stredney</b> Manager Columbia Gas of Ohio / NiSource
<b>Kathleen Herath</b> Retired Nationwide	<b>Stephen Swick</b> VP & Chief Security Officer AEP
<b>Bipender Jindal</b> Assistant VP, Director of Environmental Services CTL Engineering, Inc	<b>Kristen Sydney</b> Private Wealth Advisor Sagemark Consulting

# Ronald McDonald House

711 E. Livingston Ave. | Columbus, Ohio 43205 | (614) 227-3700  
www.RMHC-CentralOhio.org



## Mission Statement:

Ronald McDonald House Charities of Central Ohio creates, finds, and supports programs that directly improve the health and well-being of children.

### RONALD MCDONALD HOUSE

For nearly four decades, Ronald McDonald House Charities of Central Ohio (RMHC) has been serving families with seriously ill children by providing a home-away-from-home at the Columbus Ronald McDonald House.

Now, more than ever, the services provided at the Ronald McDonald House are vitally important to families of seriously-ill, hospitalized children. During the unprecedented times of the COVID-19 Pandemic, staff and volunteers at the Ronald McDonald House have worked tirelessly to continue serving families by providing a safe and comfortable environment. Our team is proud to have served our guests without interruption, caring for families in their greatest time of need.

The Columbus Ronald McDonald House is open 365 days a year, providing comfortable bedrooms with private baths, fully-equipped kitchens with dining areas, play rooms, laundry facilities, a meditation room, exercise room and informal gathering areas.

### RONALD MCDONALD FAMILY ROOM

RMHC of Central Ohio has partnered with Nationwide Children's Hospital to open a first-of-its-kind Ronald McDonald Family Room (RMFR) inside the Big Lots Behavioral Health Pavilion. This beautiful new space is a respite for families of children being treated at the new facility and features a comfortable sitting area, kitchen, dining area, laundry, shower, and a wonderful outdoor courtyard. The Family Room is provided at no charge to families. This RMFR is the first to be placed within a behavioral health facility, and we are proud to be pioneers alongside Nationwide Children's Hospital.

RMHC of Central Ohio has also partnered with OhioHealth to operate a Ronald McDonald Family Room at Riverside Methodist Hospital. This space is provided for families who have children being treated at the NICU at Riverside.

### RONALD MCDONALD CARE MOBILE

The Ronald McDonald Care Mobile is a state-of-the-art pediatric clinic on wheels. Designed from the ground up to meet the specific well-care and treatment needs of children, it is staffed by pediatric doctors and nurses from Nationwide Children's Hospital.

Providing services at little or no cost to the patient, the Care Mobile virtually eliminates financial and geographic barriers to health care access. All insurances including Medicaid are accepted.



## The Ronald McDonald House is growing for A Million Reasons

Since 1982, the Ronald McDonald House in Columbus, Ohio has provided one million nights of rest for families of seriously ill, hospitalized children. In order to serve even more families at the House, RMHC of Central Ohio has embarked on the largest expansion project in our history – a transformational campaign to provide a million more nights of rest for families when they need it most. This project will include:

- An additional 80 guest rooms to accommodate more families
- New community rooms, expanded kitchen and dining, and green space for families
- Necessary renovations to the existing structure

With the expansion RMHC will be equipped to serve an additional 2,000 families each year, increasing the families served annually to 6,500. Without the services RMHC provides, the families who rely on RMHC for housing and food will be forced to pay an average of \$100 a night for local accommodations as well as an average of \$20 per person, per day, to feed three meals. Therefore, the total annual savings to families after the expansion will be approximately \$14,200,000.

"We are thrilled to embark on this new project and work with our community for A Million Reasons," said Dee Anders, CEO and Executive Director for Ronald McDonald House Charities of Central Ohio. "This expansion will allow us to make a difference in the lives of so many more children and families, and we sincerely appreciate the support of our community. Without the generosity of Columbus and the Central Ohio region, we would not be able to accomplish this exciting growth."

When a child is sick and needs specialty care in a hospital, the Ronald McDonald House is there to help keep families close. Located directly across the street from Nationwide Children's Hospital, the Ronald McDonald House in Columbus, Ohio is one of the largest of its kind in the world. In fact, over 82,000 nights of rest are provided every year through the program.

Doctors and nurses take care of patients – RMHC takes care of the family. If it weren't for the Ronald McDonald House and the services provided by the tireless staff and volunteers, many families would simply not be able to afford the necessary care for their children.

RMHC of Central Ohio currently serves more than 4,500 families annually whose children are treated at Nationwide Children's Hospital, OhioHealth, Mount Carmel Health Systems, and The Ohio State University Wexner Medical Center. As those tremendous hospital systems grow, so the need at RMHC grows.





**Katina Fullen**  
Executive Director



**GIVING OPPORTUNITIES:**

Here are some ways in which community members can support I Know I Can.

**General Support**

General support includes individual donations, corporate and foundation contributions, estate and planned giving, as well as event sponsorships.

**Program Support**

Program support for I Know I Can allows us to continue providing innovative programs and advising services for our students in school buildings and on college campuses.

- One-on-One Advising Sessions
- FAFSA Workshops
- College Application and ACT/SAT Fee Waivers
- Virtual Reality Programming for Career Exploration

**Community Engagement**

Community engagement support enables us to take programming directly to our students and families, offering events and workshops where they live.

**Scholarship and Grant Support**

I Know I Can provides three funding opportunities for our students: the I Know I Can Grant, Dream Big Scholarship, and Founders' Scholarship. Our signature funding opportunity, the Founders' Scholarship, is a renewable scholarship worth up to \$10,000 per year for four years.

**2022 BOARD OF DIRECTORS**

Teckie Shackelford, <i>Board Chair Emerita</i>	Gene Pierce
Dr. Rebecca Butler, <i>Board President</i>	Regan Reilly
Jane Abell	Jeff Rich
Robbie Banks	Shirley Rogers Reece
Tanny Crane	Stephanie Sanders
Melanie DeAscentis	Tei Street
Susan Dixon	Michael Wasch
Mike Flowers	Cindy Webber
Dr. Mabel Freeman	Dr. Robert J. Weiler
W. Shawna Gibbs	Sue Wright
Harvey Glick	<b>Ex-Officio Members</b>
Tiffany Grinstead	Catalina Cardona
Chris Montgomery	Dr. Talisa Dixon
	Dr. Adam Weinberg
	Ernest D. West III

# I Know I Can

1108 City Park Avenue, Suite 301 • Columbus, OH 43206 • 614-233-9510  
engage@iknowican.org • iknowican.org



Facebook: [IKnowICan88](#) • Instagram: [@iknowican88](#) • Twitter: [@iknowican88](#)

**Who we are:**

For 34 years, I Know I Can has supported Columbus students who work hard and dream of pursuing postsecondary education. Over time, we have evolved from an all-volunteer organization to a team of over 60 professionals who provide college and career advising in four school districts throughout Franklin County. Even though we have expanded, our student-centered mission has not changed. We remain committed, now more than ever, to providing access to the information, knowledge, and resources every student needs to successfully achieve their goals in education, career, and life.

**WHAT WE DO**

Dream Big. Work Hard. We'll Help. That is I Know I Can's promise to Columbus students. Founded in 1988, I Know I Can is the only college access and success organization in central Ohio and focuses its service efforts in three areas:

**Early Awareness Programming**

Our AmeriCorps Ohio College Guides work with 7th-10th grade students and families to expose them to career possibilities, knowledge of college requirements and costs, and college and job opportunities through site visits.

**College and Career Access Services**

I Know I Can advisors serve in 26 high schools to increase the number of 11th and 12th grade students prepared for success after high school. Our advisors provide group and one-on-one college and career counseling, and assist in the completion of milestones, including: ACT/SAT, college application completion, and the FAFSA.

**Persistence Services**

I Know I Can staff helps students navigate social, academic, and financial barriers to attending and completing college. In close partnership with Workforce Development Board of Central Ohio, I Know I Can also provides advising support to students pursuing career pathways and job training programs.

**HOW YOU CAN HELP**

By supporting I Know I Can, you can help us continue to offer our core programming while adapting to the evolving needs of the students and families we serve. As we move forward and continue to grow, we hope you will join us.

Give online at [iknowican.org/engage/donate/](https://iknowican.org/engage/donate/) to help:

- Inspire elementary school students to dream big about their futures.
- Enable middle school students to explore in-demand careers through virtual reality programming.
- Provide high school students with early exposure to career and college opportunities.
- Guide seniors through complex admissions and financial aid processes.
- Expose students to college life through in-person campus tours.
- Provide resources for community engagement events.
- Fund grants and scholarships for high school graduates.
- Support students as they navigate college or workforce training programs for the first time.



SAVE THE DATE!

JOIN US APRIL 27, 2023

# THE COLUMBUS OPPORTUNITY SUMMIT

The annual Columbus Opportunity Summit will bring together business and economic development leaders to provide an update on how Central Ohio is preparing for expected growth in the coming years, an issue heightened by the arrival of Intel. The summit will focus on key components of equitable growth, such as roads, transit, broadband, power and other infrastructure. We'll also hear an update on Intel's progress in New Albany. Speakers and panelists to be announced soon!



PRESENTING SPONSOR



Event Details – Contact Melissa Price at 614-220-5436 or [mprice@bizjournals.com](mailto:mprice@bizjournals.com)  
Sponsorship Opportunities – Contact Steve Hewitt at 614-220-5440 or [shewitt@bizjournals.com](mailto:shewitt@bizjournals.com)



UNDERWRITING SPONSOR



BRANDING SPONSORS



RESERVE YOUR SEATS TODAY  
[bizj.us/1qgui8](https://bizj.us/1qgui8)



COMING MARCH 24, 2023 TO  
COLUMBUS BUSINESS FIRST

## THE CORPORATE ANNIVERSARY SECTION

ON MARCH 24TH, WE'LL BE SHOWCASING COMPANIES THAT HAVE REACHED THEIR 5TH, 10TH, 20TH, 50TH, 100TH OR OTHER SIGNIFICANT MILESTONES IN OUR CORPORATE ANNIVERSARY SPECIAL ADVERTISING SECTION.

Contact **STEVE HEWITT** to Feature your company's anniversary celebration in this special section!



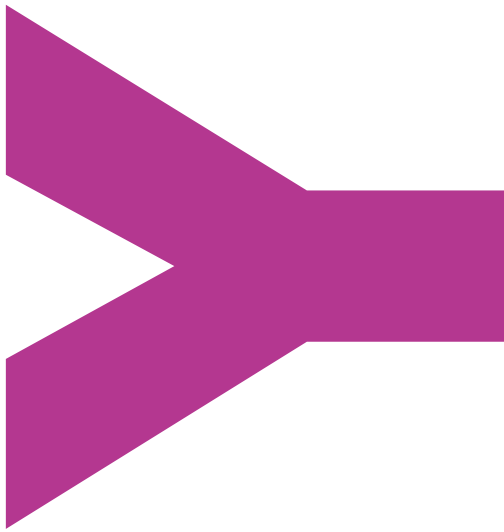
[SHEWITT@BIZJOURNALS.COM](mailto:shewitt@bizjournals.com)



614.220.5440







**“The quality of a city consists not so much of what it is than what it is becoming.”**

*Harrison M. Sayre, The Columbus Foundation's founder and 25-year volunteer director*

**Through all the changes, the challenges, the triumphs, and the unexpected, we remain inspired by and grateful for our generous, growing community and all who are poised to help move us forward with intentionality, passion, and purpose.**



**THE COLUMBUS FOUNDATION**

**Celebrating the human spirit in motion for nearly 80 years.**

[columbusfoundation.org](http://columbusfoundation.org)

*Paintings by: Mandi Caskey, Teri Dashfield, Brenden Spivey and April Sunami*

Copyright 2022 American City Business Journals - Not for commercial use